

Camberwell Community Council

Saturday 21 March 2015

12.00 pm

Employment Academy, 29 Peckham Road, London SE5 8UA

The meeting will be followed by a youth themed event from

1.00pm – 3.30pm

Membership

Councillor Kieron Williams (Chair)
Councillor Chris Gonde (Vice-Chair)
Councillor Radha Burgess
Councillor Dora Dixon-Fyle MBE
Councillor Tom Flynn
Councillor Peter John
Councillor Sarah King
Councillor Mark Williams
Councillor Ian Wingfield

Members of the committee are summoned to attend this meeting

Eleanor Kelly

Chief Executive

Date: Friday 13 March 2015



Order of Business

**Item
No.**

Title

- 1. INTRODUCTION AND WELCOME**
- 2. APOLOGIES**

Item No.	Title	Time
3.	ITEMS OF BUSINESS THAT THE CHAIR DEEMS URGENT	
	The chair to advise whether they have agreed to any item of urgent business being admitted to the agenda.	
4.	DISCLOSURE OF MEMBERS' INTERESTS AND DISPENSATIONS	
	Members to declare any interests and dispensation in respect of any item of business to be considered at this meeting.	
5.	MINUTES (Pages 1 - 13)	
	To confirm as a correct record the minutes of the meeting held on 4 February 2015.	
6.	DEPUTATIONS/PETITIONS (IF ANY)	
7.	COMMUNITY ANNOUNCEMENTS	12.10pm
	<ul style="list-style-type: none"> - Introduction: Youth themed event that will follow formal business - Any other community announcements? 	
8.	PUBLIC QUESTION TIME (Page 14)	12.20pm
	Questions particularly welcome on this occasion from young people.	
	A public question form is included.	
	This is an opportunity for public questions to be addressed to the chair. Residents or persons working in the borough may ask questions on any matter in relation to which the council has powers or duties.	
	Responses may be supplied in writing following the meeting.	
9.	NEIGHBOURHOOD FUND 2015/16 (Pages 15 - 45)	12.30pm
	Note: This is an executive function	
	Councillors to consider the recommendations contained in the report.	

Item No.	Title	Time
10.	LOCAL TRAFFIC AND PARKING AMENDMENTS	12.35pm
	Note: This is an executive function	
	Councillors to consider the recommendations contained in the report.	
10.1.	ELMINGTON ESTATE PARKING SCHEME (Pages 46 – 50)	
10.2.	CHAMPION HILL PARKING CONSULTATION (Pages 51 - 61)	
11.	COMMUNITY COUNCIL QUESTION TO COUNCIL ASSEMBLY	12.40pm

Each community council may submit one question to a council assembly meeting that has previously been considered and noted by the community council.

Any question to be submitted from a community council to council assembly should first be the subject of discussion at a community council meeting. The subject matter and question should be clearly noted in the community council's minutes and thereafter the agreed question can be referred to the constitutional team.

The community council is invited to consider if it wishes to submit a question to the ordinary meeting of council assembly in 2015.

Date: Friday 13 March 2015

INFORMATION FOR MEMBERS OF THE PUBLIC

CONTACT: Tim Murtagh, Constitutional Officer Tel: 020 7525 7187 or email: tim.murtagh@southwark.gov.uk
Website: www.southwark.gov.uk

ACCESS TO INFORMATION

On request, agendas and reports will be supplied to members of the public, except if they contain confidential or exempted information.

ACCESSIBLE MEETINGS

The council is committed to making its meetings accessible. For further details on building access, translation and interpreting services, the provision of signers and other access requirements, please contact the Constitutional Officer.

Disabled members of the public, who wish to attend community council meetings and require transport assistance in order to attend, are requested to contact the Constitutional Officer. The Constitutional Officer will try to arrange transport to and from the meeting. There will be no charge to the person requiring transport. Please note that it is necessary to contact us as far in advance as possible, and at least three working days before the meeting.

BABYSITTING/CARERS' ALLOWANCES

If you are a resident of the borough and have paid someone to look after your children or an elderly or disabled dependant, so that you can attend this meeting, you may claim an allowance from the council. Please collect a claim form from the Constitutional Officer at the meeting.

DEPUTATIONS

Deputations provide the opportunity for a group of people who are resident or working in the borough to make a formal representation of their views at the meeting. Deputations have to be regarding an issue within the direct responsibility of the Council. For further information on deputations, please contact the Constitutional Officer.

**For a large print copy of this pack,
please telephone 020 7525 7187.**



Camberwell Community Council

MINUTES of the OPEN section of the Camberwell Community Council held on Wednesday 4 February 2015 at 7.00 pm at The Albrighton Centre, 37 Albrighton Road, London SE22 8AH

PRESENT:

- Councillor Kieron Williams (Chair)
- Councillor Chris Gonde (Vice-Chair)
- Councillor Radha Burgess
- Councillor Dora Dixon-Fyle MBE
- Councillor Tom Flynn
- Councillor Peter John
- Councillor Sarah King
- Councillor Mark Williams
- Councillor Ian Wingfield

OFFICER SUPPORT:

- Dr Ruth Wallis, Director of Public Health
- Dr Sian Howell, Southwark Clinical Commissioning Group
- Claire Linane, Housing Strategy and Partnerships Manager
- David Markham, Head of Major Works and New Homes
- John Daley, Private Sector Housing Licensing Manager
- Richard Parkins, Licensing and Environmental Protection Mgr
- Michelle Normanly, Senior Project Manager, Public Realm
- Chris Mascord, Principal Consultant, Public Realm
- Fitzroy Lewis, Community Council Development Officer
- Tim Murtagh, Constitutional Officer

1. INTRODUCTION AND WELCOME

The chair welcomed residents, councillors and officers to the meeting.

2. APOLOGIES

There were none from councillors.

Kings College Hospital who had been scheduled to present under the health theme had sent their apologies.

3. ITEMS OF BUSINESS THAT THE CHAIR DEEMS URGENT

There were none.

4. DISCLOSURE OF MEMBERS' INTERESTS AND DISPENSATIONS

There were none.

5. MINUTES

RESOLVED:

That the minutes of the meeting held on 15 November 2014 be agreed as a correct record of that meeting.

Matters arising:

1. The chair said that following the transport discussion at the November 2014 meeting, Transport for London (TfL) had responded about one of the bus services. He would forward the response on to interested groups. TfL had subsequently asked for more information about the specific bus stops where the countdowns were not working.
2. Re the main junction in Camberwell - Councillor Mark Williams, cabinet member for regeneration, planning & transport, explained it was about making the junction more focused around pedestrians instead of traffic. Agreement had been reached with TfL a while ago but then they had described the model as out of date. The council was currently re-running TfL's model for them. The aim was to do that as quickly as possible. Once that happened, an implementation date would be arranged which should fit in with other schemes. The council was also looking to speed up the pocket parks programme, to see if that could be brought forward.

6. DEPUTATIONS/PETITIONS (IF ANY)

Deputation request from local residents living near a car wash on Parkhouse Street.

RESOLVED:

That the deputation be received.

The deputation explained that a hand car wash on Parkhouse Street had been causing a nuisance to residents. The main issue was noise from high pressure washers, industrial hoovers, loud music and parking issues. The car wash sold cars on the street. There was also waste water from the car wash which potentially polluted the water table. The car wash was open 8am – 7pm, seven days a week. The deputation wanted the planning department to require the car wash to apply for planning permission so that restrictions may be put in place on its practices.

Councillor Ian Wingfield added that there had been a log jam on the issue whilst the

residents waited for some council action and enforcement measures.

RESOLVED:

That the planning department be asked to move on with the job of arranging a planning application for the car wash so that proper regulations, and if necessary enforcement measures, could be introduced as soon as possible.

7. COMMUNITY SAFETY UPDATE

Inspector Richard Barton explained that he had been in place as the local police team cluster inspector since January 2015. Prior to then he had been an officer in the north of the borough around Bankside. Inspector Barton gave a summary of recent activities:

- Camberwell Green officers had been working on a Metropolitan Police Service initiative to tackle violence with injury, which aimed to prevent assaults.
- Public meeting with councillors on the Crawford Estate. In the area there was a need for more youth provision and to explore designing out crime.
- South Camberwell officers had been focusing on tackling anti-social behaviour on the Denmark Hill Estate.
- Brunswick Park officers had been working on a crack house closure.
- SE5 had an issue with motor vehicle crime and theft from motor vehicles. Residents were reminded to fit good locks and hide possessions from view.
- To combat burglary, residents were asked to fit timers on lighting.
- Inspector Barton was promoting Neighbourhood Watch. Interested residents should contact their local police team.

The chair thanked the police for extra officers being deployed on the Crawford Estate which had made a difference and been appreciated by residents.

In response to questions, Inspector Barton said he would ask officers to target cyclists riding on the pavements with fixed penalty notices.

8. HEALTH THEME

Local public health profile, Dr Ruth Wallis, Director of Public Health

- The point of public health was to protect and improve the health of the population.
- As a whole Southwark had a young population. This part of the borough had high population density and a high birth rate. The population was expected to increase by at least 8% over the next ten years.
- This part of the borough was relatively deprived compared with the rest of the borough and the rest of the country.
- In the Camberwell area, there were about 6,500 smokers and above average alcohol consumption. Higher than national average for overweight people, including children.
- Reduced life expectancy. This part of the borough had a low age for disease free life expectancy, that is the age before one can expect something serious to happen health wise. In this area it was about 55, whilst in Dulwich about 70. That impacted on their well-being and ability to work. The ambition for prevention was to make

those things happen later in life.

- Life expectancy had improved generally for health care related issues.
- Teenage pregnancy rates had reduced in recent years.
- Higher than average numbers of people living with HIV.
- People were less engaged and more socially isolated.

Ruth explained that Michael Marmot, a professor at University College London, had some general recommendations around health inequality:

- Give every child the best start in life
- Enable all children, young people and adults to maximise their capabilities and have control over their lives
- Create fair employment and good work for all
- Ensure a healthy standard of living for all
- Create and develop healthy and sustainable places and communities
- Strengthen the role and impact of health prevention.

The chair thanked Ruth and said that the last meeting of full council had debated public health. He added that it was striking how committed the council was to improving public health.

In response to questions, Ruth made the following points:

- Most adult smokers started their nicotine addiction young and numbers were continuing to fall. Health education around alcohol explained the dangers of binge drinking and the social dangers that were more likely whilst under the influence.
- Like much of Western Europe, childhood obesity was a problem in Southwark and the UK. Generally, daily physical activity had fallen and the consumption of sugary drinks and high calorie snacks had risen. A fall in the number of fast food outlets plus a rise in healthy eating / cooking lessons at school, could help tackle the problem.

Councillor Mark Williams explained that the council was pushing to extend the ultra low emissions zone to cover Southwark and preferably all of London. More than 120 people died prematurely each year in Southwark due to air pollution.

Councillor Dora Dixon-Fyle said that one of Southwark's pledges was to make it an age friendly borough. Age UK had been doing a lot of work to encourage befriending in the community to help reduce isolation and avoidable deaths, especially during the winter months.

Southwark Clinical Commissioning Group (CCG), Dr Sian Howell presented.

Improving access to GP appointments in Southwark

- The CCG want to make it easier for Southwark patients to see or speak to a nurse or GP when they need to.
- The CCG know the health service can be confusing so we want to make GP practice the first port of call.
- The CCG are investing £2 million per year in a new service.
- The service started in the south of Southwark in November 2014 and would be rolled out in the north in early 2015.

The new service

- A new service providing same day or next day appointments had replaced the walk-in service at the Lister primary care centre.
- If residents had not registered with a GP, they should contact a practice near to where they live
- The new service was available 8am to 8pm, 7 days a week. Walk-in appointments were no longer available at the Lister primary care centre.
- If a GP practice was closed, residents would be redirected to the out-of-hours service, or could phone 020 8693 9066. A&E was for emergencies only.

Why are services changing in Southwark?

- GP practices across Southwark are working together to improve access to GP services.
- The CCG know that patients often find it difficult to see a GP or nurse on the same day or the next, especially in the evenings and at weekends.
- People also told the CCG that they find services confusing and are not always sure which one to use.
- The CCG wants patients to contact their GP first to support them to more easily and quickly find the service which is right for them.

How does the new service work?

- When residents contact their GP practice they would be able to speak to a GP or nurse who can give advice. If they need to be seen, they will book an appointment in their own GP practice.
- If an appointment was not available, they can book an appointment at a new service at the Lister centre. This service was available 8am – 8pm, 7 days a week from the Lister centre.
- Any GP or nurse would, with consent, have access to a patient's health information and history.

What about for unregistered patients?

- The CCG want to support patients to register with a GP because there are lots of benefits.
- For example, if a resident had an illness, the GP would have access to on-going care and any specialist treatment needed.
- It also meant that the patient could be prescribed the right medication, for example if there were any allergies.
- If not registered with a GP, a resident could still use the new service by contacting a GP near to where they live.
- Patients will still be able to speak to a GP or nurse. If they need to be seen, then an appointment at the Lister centre could be booked.
- If patients need help finding your nearest practice call NHS England on 0300 311 2233 or go to NHS Choices (www.nhs.uk).

In response to questions, Sian made the following points:

- She was very optimistic that the federation model of GP practices working

collectively would drive up standards. The aim was to develop consistent practices and improve care for patients.

- Sian thanked several residents who highlighted the excellent work of the Camberwell Green GP surgery.
- The idea was for practices to make the best of the resources available.

Councillor Dora Dixon-Fyle, encouraged residents to join local patient participation groups (PPGs). Training was available.

Sian said they were trying to change the behaviour of 20 GP practices so it would take a bit of time. There would be more consultation in future and residents should phone their GPs and join the PPGs if they wanted to feedback their comments.

9. COMMUNITY ANNOUNCEMENTS

Neighbourhood Fund 2015/16

Fitzroy Lewis, community council development officer, explained that this new fund was an amalgam of the cleaner, greener, safer revenue programme and the community council fund. Applications could be made from 6 January – 16 February 2015. Applications were welcomed online or via paper application form. The neighbourhood fund was for projects benefitting the community that encouraged people to work together and improve their local area. Contact fitzroy.lewis@southwark.gov.uk or Tel. 020 7525 3084

Southwark Statement of Licensing Policy 2015 – 2020 consultation

Richard Parkins, licensing and environmental protection manager, explained that public consultation was currently running on the latest version of the Southwark statement of licensing policy. The council was seeking the views of residents on licensing policy about matters including alcohol and regulated entertainment. The key questions were:

- Is the policy clear
- Is it fair and balanced
- Does it adequately deal with the licensing objectives of crime and disorder, protection, nuisance and the protection of children from harm.

Consultation period would run until 30 March 2015.

Fairtrade fortnight

The chair announced that Southwark was a fairtrade borough, meaning that the council and the community had committed to coming together to promote the use and sale of fairtrade products. By choosing fairtrade products, people had the power to change the world every day.

Fairtrade fortnight this year would run from 23 February – 8 March 2015. The council were promoting all local fairtrade events on the council's website.

Southwark Quietways

Councillor Mark Williams, announced that the council were working with TfL to deliver a number of Quietways. Quietways were cycle routes away from the main roads. Residents were asked to take part in consultation. More information and an interactive map was available at www.southwark.gov.uk/cycling

10. HOUSING THEME

Southwark Housing Strategy to 2043

Claire Linane, Housing Strategy and Partnerships Manager presented.

Housing strategy vision

Principle 1 - delivering new homes - key actions:

- 11,000 new council homes by 2043 (1,500 by 2018) and 100s more shared ownership (including intermediate)
- 20,000 net new homes in the next 10 years of which 7,000 will be affordable homes, ensuring these will be genuinely affordable to our residents
- Unlocking a number of housing sites in key locations across Southwark such as Canada Water and Old Kent Road
- Working in partnership to develop good quality, well-managed privately owned and rented homes.

Principle 2 – improving housing quality – key actions:

- Providing all council homes with a quality kitchen and bathroom. Along with other improvement work to make homes fully fit for years to come
- Ensuring all homes are built to the highest standards of quality and design
- Introducing a private licensing scheme for private landlords in the centre of the borough in 2015, using the Southwark rental standard.

Principle 3 – empowering residents – key actions:

- Establishing a fund for residents to carry out their own minor repairs and put in place an independent leasehold / freehold management company so people can make independent representations to the council when quality falls short
- Rewarding resident contributions and promoting good neighbourliness through the housing heroes programme alongside establishing a strategic tenant federation to support tenant involvement and share good practice across all tenures
- Providing a menu of options to enable all residents to participate in decisions about management of their housing, whatever their time constraints.

Principle 4 – being more than a landlord – key actions:

- Enabling older people and people with disabilities to live independently in their communities by building lifetime homes, extra care sheltered housing, exploring other specialist housing options, and adapting properties
- Helping those that wanted to downsize to a smaller home through schemes such as Smart move and homeswaps
- Providing quick and easy access to quality financial and debt advice, and working with schools to engage young people early to face the realities of finding a home in London
- Providing tenancy sustainment services to support people at risk of losing their

homes.

For more information – www.southwark.gov.uk/housing strategy

A Strategy to deliver 11,000 new council homes

Presentation by David Markham, Head of Major Works and New Homes Delivery.

The Direct Housing delivery programme was set up to develop 1,000 new council homes by 2020 using the affordable housing fund (in-lieu payments and retained right-to-buy receipts). Now the intention is to build a further 10,000 over the next 30 years, with 1,500 by 2018.

Guiding Principles:

- Ensure the affordable housing fund is used towards appropriate affordable housing provision.
- Build the right kind of affordable homes to meet a range of priority needs, at good value – both build cost and running cost.
- Build high quality and well integrated homes geared to their management and maintenance as long term assets.
- Develop, primarily, on council owned land to maximise value for money.
- Make 50% of the new rental homes in each development available to tenants living on an estate within an agreed boundary.

Phase One:

- Project management team and architects appointed in 2013.
- Planning consent for all schemes
- Willow Walk on site and due to complete in March 2015.
- Enabling works undertaken on remaining phase one sites, with main work due to commence beginning of 2015 on the remaining sites.
- Most will complete by March 2016.

Phase Two:

- 5 Capacity studies completed for phase 2 with the remaining sites underway.
- Consultation with residents in early 2015.

Hidden Homes Programme:

- Aim was to create new residential homes from redundant spaces on existing housing estates. Types of sites included in the programme are disused nurseries, laundries, pram or store sheds, redundant community halls, ex rent offices and loft or drying rooms.
- Delivery would be in conjunction with major investment works to blocks or individually through Saltash, one of the council's housing partner contractors.
- Progress: 20 units produced, ranging from 1 to 5 bedrooms.
- All new homes provided through this programme would be let to a household on the housing register.

Private Rented Sector Property

Presentation by John Daley, Private Sector Housing Licensing Manager

- Southwark had about 27,500 private rental properties which accommodate about one quarter of all residents in the borough.
- The market was suffering from an imbalance in supply and demand which means a landlord could let virtually anything.
- Properties were often unsafe, overcrowded and poorly managed with landlords exploiting tenants. Standards were slipping and the density of occupation was increasing.
- The proposal was to licence all HMOs (houses in multiple occupancy) in the borough, about 10,000, as well as about 1,200 single family dwellings.
- Licensing would help to reduce anti-social behaviour, property condition and safety. It would also target the bad landlords in the borough.

Consultation on the proposals would run until 14 March 2015.

In response to questions on the three presentations, the following points were made:

- All new council homes for rent would be at target social rent.
- There were about 600 empty homes in Southwark. Some were on the Aylesbury Estate and some were empty due to the death of the tenant. For the remainder, the maximum council tax was charged, but the number of empty homes in the borough was not a huge problem.

The chair thanked officers for their presentations.

11. CLEANER GREENER SAFER CAPITAL PROGRAMME 2015/16

Note: This is an executive function.

The community council considered the information contained in the report.

RESOLVED:

BRUNSWICK PARK

D'Eynsford sheltered housing communal garden project and The Mary Datchelor community garden to share	£10,000
Lucas Gardens picnic area with bar-b-q	£10,000
Stanswood Gardens, front garden stage 1	£7,340
Southampton Way Estate table tennis	£6,000
Brunswick Park: a new play area	£33,000
Glebe Estate – children's playground (north area only)	£8,000

Glebe Estate – The greener neighbourhood	£4,500
Elmington Gardens, community allotment/garden	£1,500
Lettsom Estate – Pattball	£2,000
Bike hangar – location to be agreed	£10,000
CAMBERWELL GREEN	
Cleaner safer car park (Laird House)	£21,200
Comber House new play area, part-funding	£10,000
The finish (Kevan House)	£5,200
Lighting the dog pound on Comber Grove	£12,500
Seating / planting and greening on Brandon 3	£9,100
Tree lighting on Brandon 3 estate	£8,320
Blue Elephant Theatre, disabled toilet improvements	£7,800
No Go Area (Honiton House, Crawford Estate)	£5,000
Access and sight (Clubland), part-funding	£5,400
Outdoor gym, location to be agreed, part-funding	£5,004
SOUTH CAMBERWELL	
Champion Park Estate, cycle storage	£9,360
Getting fit for free !!	£18,750
Green roof at the centre for wildlife gardening	£10,000
Champion Park, renovation and maintenance of raised beds	£15,000
Building communities, sharing information	£8,250
Champion Hill Estate, bike storage	£9,360
Sunray Avenue, green space improvements	£10,000

Brunswick Park councillors explained that they would transfer £2,816 from the neighbourhood fund into the cleaner greener safer capital budget.

Camberwell Green councillors added that they would look at the cycle storage hangers on the Grosvenor Estate. Funding would be sought from TfL and if that was unavailable they would support the funding of that in future.

12. PUBLIC QUESTION TIME

A local resident enquired in writing about the proposed expansion of Crawford School. He explained that he was not opposed to the expansion of Crawford School but was concerned about the wording of the notice and the process.

The chair explained that an ambitious school extension of Crawford School had been proposed and a report would be going to cabinet soon.

13. LOCAL PARKING AMENDMENTS

Note: This is an executive function.

The community council considered the information contained in the report.

RESOLVED:

That the following local traffic and parking amendments, detailed in the appendices to the report, be approved for implementation, subject to the outcome of any necessary statutory procedures:

- Adys Road – install double yellow lines at the junction with Oglander Road to improve sight lines.
- Toulon Street – install double yellow lines adjacent to entrance to underground storage business to provide access at any time
- Blanchedowne – install double yellow lines adjacent to a planned vehicle crossover that will provide access to No. 48.

14. LOCAL TRAFFIC AND PARKING AMENDMENTS

14.1 EAST CAMBERWELL PARKING ZONE REVIEW

Note: This is an executive function.

The community council considered the information contained in the report.

RESOLVED:

That the community council note the proposed consultation boundary and approve the methods for the review of East Camberwell controlled parking zone.

14.2 GROVE HILL ROAD PEDESTRIAN SAFETY AND ACCESSIBILITY SCHEME

Note: This is an executive function.

The community council considered the information contained in the report.

RESOLVED:

That the community council approves the implementation of the scheme subject to the outcome of any necessary statutory procedures.

Councillor Peter John asked that the concerns of local residents about dropping off children at Dog Kennel Hill Primary School be noted.

14.3 COLEMAN ROAD NEIGHBOURHOOD: WALKING, CYCLING AND PUBLIC REALM IMPROVEMENTS

The community council considered the information contained in the report.

RESOLVED:

That the report be noted and approved subject to consideration being given by the cabinet member for regeneration, planning and transport to extending the controlled parking zone and looking into motorcycle specific parking provision.

14.4 WELLS WAY WALKING AND CYCLING IMPROVEMENTS

The community council considered the information contained in the report.

RESOLVED:

Members noted and approved the report. Councillor Mark Williams, cabinet member for regeneration, planning and transport, assured residents, some of whom raised concerns at the meeting, that he would follow up on the resident conversations and see how the proposals in the report could be improved.

15. COMMUNITY COUNCIL QUESTION TO COUNCIL ASSEMBLY

There was none put forward at this meeting.

Meeting ended at 9.50pm

CHAIR:

DATED:

Camberwell Community Council

Public Question form



Your name:

Your mailing address:

What is your question?

Please give this form to Tim Murtagh, Constitutional Officer, or Fitzroy Lewis, Community Council Development Officer

Item No. 9.	Classification: Open	Date: 21 March 2015	Meeting Name: Camberwell Community Council
Report title:		Allocation of Neighbourhoods Fund 2015-16	
Ward(s) or groups affected:		Brunswick Park, Camberwell Green and South Camberwell wards	
From:		Head of Community Engagement	

RECOMMENDATION

1. That the Camberwell Community Council allocates a total of £96,620 of the Neighbourhoods Fund 2015/16 from the list of applications outlined in appendix 1. This amount consists of two elements, namely £90,000 available for 2015/16 and £6,620 of unallocated funding carried forward from previous years revenue programmes, known as cleaner, greener, safer revenue (CGS revenue) and community council fund (CCF).

BACKGROUND INFORMATION

2. The neighbourhoods fund is a new funding programme, which was created by the merger of two former revenue programmes known as CGS Revenue and CCF.
3. The CGS revenue fund was established in February 2012, initially consisting of £210,000 borough-wide funding budget with an allocation of £10,000 per ward. In February 2013, council assembly agreed to increase the funding programme to £420,000 each ward receiving £20,000.
4. The purpose of introducing the CGS revenue fund in 2012 was to give community councils decision making powers over significant amounts of revenue funding, that they could allocate to meet locally determined priorities, and also to enhance and complement the effectiveness of the CGS Capital funding programme.
5. Community councils also took decisions on the CCF and awarded revenue grants of between £100 and £1,000 for community projects. The total fund available borough-wide for projects in 2014/15 amounted to £122,000.
6. Both the CGS revenue and CCF will cease on 31 March 2015 as separate funding programmes and will be replaced by a single Neighbourhoods Fund. During the 2015/16 budget setting process, a further £88,000 was allocated to the Neighbourhoods fund, bringing the allocation per ward to £30,000. The criteria for the new fund will, in the main, remain the same as previous programmes but have been streamlined to reflect the new brand.

KEY ISSUES FOR CONSIDERATION

7. The cabinet member for communities, employment and business authorised the amalgamation the CGS Revenue fund and CCF, into a single funding programme to create a new Neighbourhoods Fund for the 2015/16 round and onwards. This decision (IDM) was taken on 12 December 2014.

8. Each ward will have £30,000 of revenue grants to allocate. It is proposed that any unallocated funds from both CGS revenue and CCF are to be carried forward from previous rounds (years) and added to the financial year commencing 1 April 2015.
9. The community councils will use the criteria set out below for the allocation of this funding.
 - a. Creating opportunities for people from different backgrounds to get on well together; (e.g. community cohesion)
 - b. Establishing projects which treat each other with respect and consideration (e.g. being a good neighbour, inter-generational contacts)
 - c. Encouraging residents to be responsible for their own neighbourhood (e.g. community clean-ups; volunteering initiatives)
 - d. Specific measures to enhance a neighbourhood's environment (e.g. increased cleaning)
10. A community council may choose to allocate some of their neighbourhoods fund resources to their CGS capital allocations.
11. Subject to the availability of resources, the neighbourhoods fund may be used to 'buy' services from the council.
12. As with any executive decision taken by community councils this is subject to the council's existing scrutiny arrangements.

Community impact statement

13. The roles and functions of community councils include the promotion of involvement of local people in the democratic process. Community councils take decisions on local matters including environmental improvement and community safety as well as consultation on a wide range of policies and strategies that affect the area.
14. An explicit objective within community council is that they be used to actively engage as widely as possible with, and bring together, Southwark's diverse local communities on issues of shared mutual interest. The merger of CGS Revenue and CCF will not adversely affect groups who normally apply for these funding streams.
15. The allocation of the Camberwell Neighbourhoods Fund will, in the main, affect the people living in the Camberwell Community Council area. However, in making the area a better place to live and improving life chances for local people, Camberwell Neighbourhoods Fund activities will have an impact on the whole of Southwark.
16. The Neighbourhoods Fund is an important tool in achieving community participation and cohesion.
17. In fulfilling the above objectives that community councils have of bringing together and involving Southwark's diverse local communities, consideration has also been given to the council's duty under The Equality Act 2010 which requires the council to have due regard when taking decisions to the need to:
 - a. Eliminate discrimination, harassment, victimisation or other prohibited conduct;
 - b. Advance of equality of opportunity between persons who share a relevant protected characteristic and those who do not share it
 - c. Foster good relations between those who share a relevant characteristic and those that do not share it.

18. Of particular regard are issues of age, disability, gender reassignment, pregnancy and maternity, race, religion or belief, sex, sexual orientation. In this process there are no issues that contravene the Equality Act 2010.
19. Having due regard to the need to advance equality of opportunity is further defined in s.149 as having due regard to the need of:
 - Remove or minimise disadvantages connected with a relevant protected characteristic.
 - Take steps to meet the different needs of persons who share a relevant protected characteristic.
 - Encourage persons who share a relevant protected characteristic participate in public life or any other activity in which they are under- represented.
 - Due consideration was given to equalities impact assessment during the design of this awards process and no adverse impact was evident.

Due consideration was given to equalities impact assessment during the design of this awards process and no adverse impact was evident.

Resource implications

20. No resource implications

Consultation

21. Neighbourhoods Fund projects may require consultation with stakeholders, including the project applicant, local residents and tenants and residents associations where applicable.

Financial implications

22. The Camberwell Neighbourhoods Fund has been allocated a total of £90k for 2015/16. In addition to this, funds totaling £6,620 remain unallocated from previous years' allocations and thus also available to allocate.
23. It is recommended that community councils set aside some of the unallocated funds from previous years in order to prevent an over allocation of funds, as well as act as a contingency from which urgent or incidental requests can be funded throughout the year. It must also be noted that the unallocated figures reported in the previous paragraph represent current best estimates as the 2015/16 funding round is only finally over on 31 March 2015.
24. Projects that are unlikely to be completed within the year will be reported to the community council and available funding may be allocated to other projects or carried over to the following financial year.

SUPPLEMENTARY ADVICE FROM OTHER OFFICERS

Director of Legal Services

25. The Local Government Act 2000 ('the 2000 Act') gives the Leader the power to delegate any executive function to whoever lawfully can undertake the function. The allocation of the neighbourhoods fund is an executive function.
26. Community councils are 'area committees' within the meaning of the 2000 Act and executive functions can be delegated to them by the Leader.

27. The Localism Act 2011 gives councils a general power of competence whereby they have power to do anything that individuals generally may do. This power can be used even if legislation already exists that allows a local authority to do the same thing. However the general power of competence does not enable a local authority to do anything which is was restricted or prevented from doing under the previous legislation.
28. The general power of competence includes the power to:
- (a) incur expenditure
 - (b) give financial assistance to any person
 - (c) enter into arrangements or agreements with any person
 - (d) co-operate with or facilitate or co-ordinate the activities of any person
 - (e) exercise on behalf of any person any functions of that person; and
 - (f) provide staff, goods, services or accommodation to any person.
29. The provision of funding under the Neighbourhoods Fund falls within the scope of the kind of activities the council can undertake under the general power of competence as this includes the power to give financial assistance to any person.
30. In allocating funding under the Neighbourhoods Fund community councils must have regard to the council's equality duties set out in section 149 of the Equality Act 2010. The report author has demonstrated how those duties have been considered in the body of the report at paragraphs 17, 18 and 19 of the report.

Strategic Director of Finance and Corporate Services

31. The 2015/16 budget allocation for the new Neighbourhoods fund has been agreed by council assembly. It stands at £30,000 per ward and thus £90,000 has been awarded to Camberwell Community Council. A further £7,000 has been carried forward from previous years and is thus also available for allocation.

BACKGROUND DOCUMENTS

Background Papers	Held At	Contact
Neighbourhoods Fund Report IDM	160 Tooley Street, London SE1 2QH	Pauline Bonner 0207 525 1019
Cleaner Greener Safer Revenue IDM Report	160 Tooley Street, London SE1 2QH	Forid Ahmed 0207 525 5540
Policy and Resources Strategy 2012/13-2014/15 - Revenue budget	http://modern.gov.southwark.gov.uk/documents/s35022/Report%20Policy%20and%20Resources%20Strategy%20201314%20-%20201516.pdf	

APPENDICES

No.	Title
Appendix 1	Camberwell Community Council Neighbourhoods Fund Application

AUDIT TRAIL

Lead Officer	Forid Ahmed, Community Councils Coordinator	
Report Author	Fitzroy Lewis, Community Council Development Officer	
Version	Final	
Dated	9 March 2015	
Key Decision?	Yes	
CONSULTATION WITH OTHER OFFICERS / DIRECTORATES / CABINET MEMBER		
Officer Title	Comments Sought	Comments included
Director of Legal Services	Yes	Yes
Strategic Director of Finance and Corporate Services	Yes	Yes
Cabinet Member	No	No
Date final report sent to Constitutional Team		9 March 2015

Camberwell Community Council Neighbourhoods Funds 2015/16 Applications

Borough wide applications:

Reference:	Name of Group:	Name of Project:	Project Description	Funding applied for [£]:	Proposed Award
415951/ CCC/15/1	Basic Business Initiative UK (BBI UK)	Southwark Enterprise Minds (SEM)	SEM will help 100 unemployed young people into employment or self employment, providing support services including: Survey of support needs; Finance and marketing training, free business start up mentoring, and learning practical skills, confidence and motivation The estimated running cost is £65,000 at a unit cost of £650 per beneficiary.	£49,850.00	
415970/CC C/15/2	Faces in Focus	Solution Based Counselling	Development and implementation of solution focused counselling to enable early intervention and the prevention of mental health problems in young people across Southwark and to help and improve their emotional and physical wellbeing. A key aim is to reduce the number of young people who end up in acute mental health care and to reduce the number of young people with initial signs of mental health issues becoming involved later with the criminal justice system and acute services, by building on their capabilities so they can engage positively in their community, make informed choices about and fulfil their potential.	£4,813.90	

Camberwell Community Council Neighbourhoods Funds 2015/16 Applications

Reference:	Name of Group:	Name of Project:	Project Description	Funding applied for [£]:	Proposed Award
414790/CC C/15/3	Golden Hope	Access To Work For All	We wish to develop a new generation of Black entrepreneurs by bringing together unemployed, failed and active African businesses, young adult graduates and other community leaders and businesses to meet, socialise, share knowledge, skills and expertise. We aim to assist and improve the welfare of French speaking black and ethnic minority communities living in Southwark particularly within the Elephant and Castle, Walworth, Bermondsey, Camberwell and Peckham area and strengthen the local economy and encourage investment.	£2,962	
415025/CC C/15/4	Iconic Steps	A Moving Image	Working with 12 - 24 young people aged 16 – 25, resident in South London and from disadvantaged backgrounds, Iconic Steps will run a two-week intensive video production-training course that will run alongside the creation of a feature film in Peckham, exploring the effects of gentrification in south London communities. In partnership with The Bussey Building, National Film and Television School (NFTS), 2Inspire and Aim Image. They will create their own two, 3 min documentaries about the community using the skills and knowledge they have learned.	£5,500.00	

Camberwell Community Council Neighbourhoods Funds 2015/16 Applications

Reference:	Name of Group:	Name of Project:	Project Description	Funding applied for [£]:	Proposed Award
408712/CC C/15/5	Leaders of Tomorrow (LOT)	Young Leaders in Training	This project will develop leadership skills in children and young people from Black and Minority Ethnic communities. Through a combination of discipline, clear parameters and tough love, we help disadvantaged children and young people grow in confidence and maturity to achieve in their personal, social and academic development. LOT provides one to one/group mentoring support to help them regain focus, build confidence and address inappropriate and anti-social behaviour. In addition, our project will be able to provide extra coaching to those who show academic promise but lack the confidence to apply to prestigious educational institutions. We will be able to help them prepare personal statements, CVs, hone study skills and interview techniques. In summary, we have a track record in turning around BME students.	£5,000	
414104/CC C/15/6	New Covenant Church	Celebrating Southwark Mass Choir and Dance	The project aims to bring peace and joy to East Walworth, Livesey, Peckham, South Bermondsey and other Southwark wards by preparing a group of 250 singers and 50 dancers from the local community, to perform at the Elephant & Nun Festival. It also aim to reduce crime by unveiling career prospects in art and media to local people.	£4716.31	
414493/CC C/15/7	Pempeople Bike Club	London To Brighton Bike Ride	To get young people aged 16-21 to complete the London to Brighton Bike Ride and get a sense of achievement.	£1,400	

Camberwell Community Council Neighbourhoods Funds 2015/16 Applications

Reference:	Name of Group:	Name of Project:	Project Description	Funding applied for [£]:	Proposed Award
414114/CC C/15/8	Playdagogy (whole borough application)	Playdagogy - whole borough project	The project uses education and capacity building to increase the inclusion and participation levels of disabled children (aged 8-12) in sport. Playdagogy is underpinned by the social model of disability and will develop and reinforce inclusion, understanding, accepting and adapting for the different needs of everyone in society through children's active learning. Those who are usually inactive will be strongly encouraged to participate not only by the open and inclusive method of the games but also by enhancing their peers attitude towards them and through gaining a positive experience of achievement in sport.	£4,844.92	
414663/CC C/15/9	Southwark Community Festival	Summer Festival	This outreach event, Summer Festival, would be a springboard to promote and encourage a better community life where everyone feels welcomed. This will be an opportunity for us to interact with the community, share, entertain and teach some skills. Our ultimate goal is to equip, encourage team work and develop community cohesion.	£ 3,745	
414808/CC C/15/10	Southwark Muslim Youth Society	what I know about Islam	education no to radicalisation	£1,200	

Camberwell Community Council Neighbourhoods Funds 2015/16 Applications

Reference:	Name of Group:	Name of Project:	Project Description	Funding applied for [£]:	Proposed Award
413611/CC C/15/11	Victory Youth Group	Where U Going ? Project	The aim of the project is to get young people to think and ask themselves the question "Where U Goin' with your life?". Using performing arts, real life testimonials and more, we aim to get young people thinking positively about life; especially theirs. Our work in the borough has taught us that many have family problems, peer pressure, gang affiliated problems, teenage pregnancy, depression, addictions, lack of direction in life amongst others and this project aims to motivate them to believe that regardless of the problem, they have the power within them to make (positive) things happen in their lives. We aim to educate them on making right choices and we have had prior success at this through our events such as 'In Too Deep', 'Hooked', 'Heart Break Estate' (which all drew hundreds of youths to it; the biggest being over 600 youths)	£4,858	
377890/CG S/CCC/15/12	Volunteer Centre Southwark	Mud Kitchens for Southwark	Build 6 mud kitchens in schools and nurseries with parent involvement. A mud kitchen is a permanent timber structure for outdoor play. It helps develop language skills, social play and improves math and science skills and supports healthy eating.	£2,278	
414805/CC C/15/13	Yoruba Awareness Foundation	School Exclusion Project-Alternative agenda	To engage with young people who may have been excluded from mainstream education with a view to examining alternate educational support program program from a cultural and language perspective	£4,832	

Camberwell Community Council Neighbourhoods Funds 2015/16 Applications

Multiple community council areas applications (not Boroughwide):

Reference:	Name of Group:	Name of Project:	Project Description	Funding applied for [£]:	Proposed Award
414957/BBW &C/15/1	Art in the Park	Children art club/ Tree of knowledge	<p>A Saturday morning project where children can learn:</p> <ul style="list-style-type: none"> -to collaborate with other children and with adults -introduce children to cultures from around the world - build confidence, so every child can feel pride in his or her original artistic creations. -build local community. -bring together children and young adults of different backgrounds. <p>The project will celebrate art through arts and crafts tasks using recycling materials in order to create the 'Tree of Knowledge'. A tree structure will be already prepared so children can build on that.</p> <p>This project will work towards the Open squares weekend and therefore the public showing of the 'Tree of Knowledge' in June 2015.</p>	£2,100	
413853/BBW &C/15/1	Capoeira Academy UK	2nd Capoeira Charity Festival	<p>We would like to deliver our next grading festival this year with increased numbers of our community projects participating in the free event. Increasing community participation in a family orientated activity increasing the activity levels of children and their parents in Camberwell & Peckham areas. With specialist capoeira and Brazilian folklore dance workshops for parents and children participating in classes we hope to encourage the community audience to participate in the regular capoeira classes thus increasing the physical activity levels of Southwark residents.</p>	£4,522	

Camberwell Community Council Neighbourhoods Funds 2015/16 Applications

Reference:	Name of Group:	Name of Project:	Project Description	Funding applied for [£]:	Proposed Award
414798/C&PN/15/1	London Tribes and Tongues	Festac 2015	London Black and African Festival of Arts and Culture, is a festival that is designed to be an annual event. It will be a spectacle of cultural diversity that will attract thousands of visitors from within and outside the Borough. It will showcase music, dance, drums and culture from several African countries. Known as the "Festival in the Park", it will also feature a massive "kid zone" and "Mami Market". Arrangements are being made for the festival to be partnered by several African Embassies and High Commissions here in London. The main benefit of this festival is that it presents the general public an opportunity to see what it really means to live in a Multi-Cultural Society.	£116,905	
416118/C,D&PN/15/1	Southwark Eid (South) Team	southwark Eid 2015	The aim of the project is to celebrate the festival of Eid which is inclusive to all communities of faith and no faith and strengthening the diversity and harmony in the London Borough of Southwark	£954.99	
419249/C D&PN/15/2	Southwark Explorers Club	Southwark Pensioners' Club	We organise visits by Southwark Pensioners, weekly on average, at affordable cost to places of cultural, artistic and historic interest. We aim to share a wide variety of interesting activities with older people in Southwark. We have no paid staff, all the work involved being done by unpaid members. Our members come from a wide range of social, cultural, religious and ethnic backgrounds.	£4,500	

Camberwell Community Council Neighbourhoods Funds 2015/16 Applications

Reference:	Name of Group:	Name of Project:	Project Description	Funding applied for [£]:	Proposed Award
413869/C&PN/15/2	Southwark Pensioners Centre	Sheltered & Safe	We would like to encourage older adults living in sheltered housing units and older peoples blocks to stay fit and healthy both in mind and body.	£8,000	
406771/BBW &C/15/1	Tennis2Bee	Tennis	Inclusive and diverse accessibility to tennis for all.	£6,130	
412083/BR&C R/15/1	Walworth Golden Oldies Community Care Project	3 step healthy living Program	This project is designed to bring people together through exploring Holistic living and wellness. This project will take a three-step approach to improving health. Firstly, we will be looking at diet. We enlist the services of a qualified nutritionist who will explore with the group ways of improving their diets we will also be looking at the benefits of a raw diet and green juicing. Secondly, we will be looking at ways of improving healthy through exercising the mind and body we will be enlisting the services of a qualified facilitators who will lead the group through meditation and yoga sessions. The third part of the project will involve the members being introduced to alternative therapies these will include reflexology and massage.	£4,728.68	
414882/BBW C&PN/15/1	Wells Way Pop Up	Wells Way Pop Up - arts & community participation programme	We want to develop our successful pilot at Wells Way Pop Up (Sept 14 – Mar 15) of an arts and social space in the former Old Library, Wells Way. We will focus on offering activities to local residents during the school summer holidays, half terms (May & October) and regular weekends. Our vision is to breathe life and inspiration back into the building to encourage a wider conversation about bringing it back into more permanent use. We aim to enhance park life for local residents linking with events such as FunPalaces, Open House, Camberwell Arts Festival, Elephant & Nun, involving residents in arts events, gigs, workshops and exhibitions, as well as offering a work & meeting space in our cafe.	£4999.2	

Camberwell Community Council Neighbourhoods Funds 2015/16 Applications

Reference:	Name of Group:	Name of Project:	Project Description	Funding applied for [£]:	Proposed Award
413481/PN&C/15/3	Poverty Eradication International	GREEN COLLECTION TO GREEN JOBS	<p>This project intends to make our local community sustainable through recycling waste materials. The project does not only make our neighbourhood clean, it goes a long way to equip youths with abilities and skills that would enable them to be financially sustainable. It will also help to curb anti-social behaviour and truancy.</p> <p>About 35 youths, most excluded citizens and adults, will collect recyclable waste materials from the streets as our raw materials for the final products. They will be taught how to use these waste materials to recycle them into beautiful jewelries for example (earring, beads, necklace, bangles, chains) purses, paper bags and household items such as placemats, doormats, blinds.</p>	£30,000	

All ward applications:

Reference:	Name of Group:	Name of Project:	Project Description	Funding applied for [£]:	Proposed Award
414739	Workwise Projects	Making the most of Southwark	<p>Support 40 women who are unemployed or on low incomes. The project will allow them to try out council and voluntary sector activities that are conducive to a healthy lifestyle. Participants will find out what is happening locally and become more confident about taking part in health-promoting activities on a continuing basis. The project would take place between April and December 2015 and would visit different venues in Camberwell and the surrounding area.</p>	£4,452	

Camberwell Community Council Neighbourhoods Funds 2015/16 Applications

Reference:	Name of Group:	Name of Project:	Project Description	Funding applied for [£]:	Proposed Award
414604	Camberwell Free Film Festival	Camberwell Free Film Festival	The Camberwell Free Film Festival seeks to achieve the following outcomes: To give Camberwell residents free access to quality film locally, increasing the cultural offer in a neighbourhood with limited cultural provision. To use film as a vehicle to promote a community spirit in Camberwell and enable people to discover the wealth of hidden spaces as well as to enjoy the better known venues in SE5 and support and promote local businesses	£3,000	
414773	Good Gym	GoodGym Southwark	GoodGym aims to achieve 4 things in Camberwell: Reducing isolation and loneliness for older people We reach the most isolated and lonely older people and make sure they get regular visits. Increasing community cohesion We supporting people into volunteering and introduce them to new projects and people in their area. Getting people fit We provide exciting free fitness sessions lead by qualified fitness leaders that keep people motivated to improve their fitness. Improving public space GoodGym gets hundreds of people involved in improving public space with weekly volunteering and fitness sessions.	£5,000	
419249	Southwark Explorers Club	Southwark Pensioners' Club	We organise visits by Southwark Pensioners, weekly on average, at affordable cost to places of cultural, artistic and historic interest. We aim to share a wide variety of interesting activities with older people in Southwark. We have no paid staff, all the work involved being done by unpaid members. Our members come from a wide range of social, cultural, religious and ethnic backgrounds.	£4,500	

Camberwell Community Council Neighbourhoods Funds 2015/16 Applications

Brunswick Park ward applications:

Reference:	Name of Group:	Name of Project:	Project Description	Funding applied for [£]:	Proposed Award
415039	Camberwell Choir School	Making Music Matter: Camberwell Choir School's 25 year celebration project	CCS is this year celebrating 25 years of giving access to high-quality training in music and the performing arts to the children and young people of Camberwell. We want to set up a program of modernisation and celebration themed around the anniversary to include a summer family workshop, a reworking of the website and a major celebration of our impact on Camberwell in November with former and present students. We also want to increase the numbers of children from the local estates by targeted local publicity and allow more staff time to monitor progress and achievement.	£3,462	
414019	Employment Academy Community Group	Employment Academy Community Activities Group	The Employment Academy is a community resource supporting long term unemployed and disadvantaged members of the local community to get and keep work. Late Night Learning is a project bringing together individuals with a range of skills to share with members of the local community who will benefit from developing these skills. Along with the skills and confidence achieved for individuals engaging with this programme we would hope that the project will also increase awareness of the range of services provided at the Employment Academy and support our work to get local people into work.	£5,000	
414916	Friends of Brunswick Park	Annual summer Fete	A community event to encourage social inclusion. Lots of games and activities for the whole family.	£1,500	

Camberwell Community Council Neighbourhoods Funds 2015/16 Applications

Reference:	Name of Group:	Name of Project:	Project Description	Funding applied for [£]:	Proposed Award
414979	Joseph Adeleye	Maestro (Music Workshop)	<p>The project aims to bring together people in the community through music and music technology via group singing/choral singing and the playing of musical instruments (keyboard, acoustic guitar, drums, bass guitar) and also sound for media performances. The latter will consist of how to set up the sound for a small venue and will teach skills such as reacting to what is going into microphones to ensure quality output in speakers.</p> <p>A project handbook will be collated to distribute to participants with learning objectives that they can tick off. However, each participant will be actively supported with a mentor in their chosen field (vocals, instrument or sound for media) and encouraged to work at their own pace. The project will culminate with a 2-3 hour performance where the skills learned can be put on show for friends and family members to attend</p>	£10,000	
413789	Sceaux Gardens Estate Tenants and Residents Association	Children's After School and Holiday Club	<p>The project seeks to provide a safe and inclusive environment for children and young people living on Sceaux Gardens to socialise together.</p> <p>By attending organised activities children are well cared for and learn important life skills such as team-work and respect for others.</p>	£5,000	
414888	Stanswood Garden Project	Stanswood Garden Project community garden base – maintenance and short one day workshops.	<p>To maintain the Garden Base to health and safety and RHS horticultural practices standards to allow access by local community.</p> <p>To run one day workshops for local community: sowing seeds, propagation, and bulb planting.</p>	£539	

Camberwell Community Council Neighbourhoods Funds 2015/16 Applications

Reference:	Name of Group:	Name of Project:	Project Description	Funding applied for [£]:	Proposed Award
414891	Stanswood Garden Project	Stanswood Garden Project Newsletter	Publicise and distribute Garden Newsletter as a pilot project with garden news, tips, advices, monthly garden diary and info promoting local Community Garden Groups as well as leaflets regarding Stanswood Garden Project (SGP) activities: one day workshops – sowing seeds, vegetative propagation, and spring bulbs planting	£334	
414786	Wells Way Triangle Residents Association	Capoeira Angola Community	We want to establish a Capoeira Angola Community within the Wells Way Triangle area, running free weekly classes for children and young people/adults through the year, creating a space for local residents to manifest their energy into positive channels, by nurturing a sense of belonging and bringing people together. A blend of game, dance, acrobatics, martial art and music, Capoeira Angola (CA) is a form of education and personal development suitable for all ages and fitness levels. By offering free classes to children, young people and adults, we aim to encourage and nurture family/community relationships through the regular practice of this culturally rich art form.	£5,000	
404470	Southwark Citizens Advice Bureaux Service	Refugee Week Event	To celebrate the contribution made by migrants and refugees to the community and to raise the awareness of health and well being issues and entitlements and responsibilities	£600	
377351 (CGS)	Brunswick Park TRA	Brunswick Park Play Area Southwark and the surrounding park (CGS)	Brunswick Park play area is old, badly designed and no longer fit for purpose. It needs new, age-appropriate equipment and a ground surface suitable for all ages. The project will include a redesign process involving local children.	£2,816	

Camberwell Community Council Neighbourhoods Funds 2015/16 Applications

Reference:	Name of Group:	Name of Project:	Project Description	Funding applied for [£]:	Proposed Award
417449	CMI world (Community Monitoring Investment C.I.C)	The Learning higher project	By engaging immigrant (second generation)BME and working-class white young people to become more involved within the mainstream community, and offering them skills training to help them navigate some of the barriers they face in their everyday lives, this project will help to support integration and common British values for all participants and promote positive aspirations. Our experienced sessional worker will be on hand to help people with their concerns and issues. The key milestones will on how many vulnerable people we connect with, and how many at-risk beneficiaries pass through our educational activities to becoming involved with social innovation and community cohesion activities	£8,250	

Camberwell Green ward applications:

Reference:	Name of Group:	Name of Project:	Project Description	Funding applied for [£]:	Proposed Award
414710	Training & Activities Program	Disability Training & Activities	The main aim of this project is to train and equip people with disabilities with the tools and skill sets essential in improving their livelihood and quality of life. The activities will be structured to suit their needs, improving daily living skills, developing entrepreneurial or employability skills for prospective job applicants or building confidence and motivation. We also hope to instil positive thinking behaviour in all our members through our work. We seek to provide services in particular to individuals with physical disability and learning impairment. Amongst the basic training classes, individuals may choose to undertake will include, English language, IT skills, administration, reception work, accounting and healthcare training.	£110,000	

Camberwell Community Council Neighbourhoods Funds 2015/16 Applications

Reference:	Name of Group:	Name of Project:	Project Description	Funding applied for [£]:	Proposed Award
414277	Bethwin Road Playground	Crafty Carnival	To deliver a series of crafts and creative arts workshops for children, young people and families culminating in a Community Carnival on an African/ Caribbean theme. These workshops will include story-telling, story-making, crafts with recycled materials, games, songs, drumming, drama, costume making and more.	£3,500	
414642	Blue Elephant Theatre/ Free To Act Project	Free To Act	The Free to Act Project tours to local youth organisations and schools to deliver creative arts workshops within the community and is an innovative young people's project which provides a space where young people can find their individual gifts and talents. Young people explore and refine their skills and showcase them throughout, to a final public performance. The Free to Act group specialises in bringing out the hidden potential within young people – giving young people the freedom to step out of their shells and act upon their creative thoughts, dynamic ideas, & social themes which influence their lives.	£4,117	

Camberwell Community Council Neighbourhoods Funds 2015/16 Applications

Reference:	Name of Group:	Name of Project:	Project Description	Funding applied for [£]:	Proposed Award
414968	Camberwell After School Project	CASP's Parent Champion project	<p>From April 2015 we aim to offer the Free two-year olds Early Years Foundation service to local parents for 24 children under 5 years old. To run alongside this service we aim to pilot a Parent Champion project to help deliver the free two-year-old Early Year's Education to families within the Camberwell ward. The aim is to recruit a volunteer parent Champion Coordinator and 2 parent volunteer champions who would represent different sectors of the community, using peer to peer model, targeting communities where participants in early learning and childcare are less represented. The parent Champions volunteers coordinator will work 10 hours per week responsible for the day to day management of volunteers, including recruitment, training and supervision. The volunteers will spend a total six hours per week making links with local parents to tell them about, and encourage them to use, services such as free places for two, three and four year olds. As local parents they can talk informally, drawing on their own positive experiences to build confidence and overcome language, cultural, isolation and other barriers in accessing service. The parent Champion aim is to reach parents missing out on information about childcare and early learning services.</p>	£8,835	
414859	Carnaval del Pueblo Association	Sing and Inspire!	<p>Carnaval del Pueblo will bring together mature members of the Latin and local community and form a new singing group in Camberwell, based at the Southwark Pension Centre in Camberwell. Songs learnt will be performed at our 'Plaza Latina' Nursery Row Park based, open air events. To achieve this we will recruit an experienced co-ordinator who will visit meeting places of the elderly to inspire and invite participation as tutors and participants.</p>	£5,000	

Camberwell Community Council Neighbourhoods Funds 2015/16 Applications

Reference:	Name of Group:	Name of Project:	Project Description	Funding applied for [£]:	Proposed Award
414816	D'Eynsford TMO CIC	Secret Garden: Get Gardening!	To engage more residents in the Secret Garden Project including some additional 'greening' across the wider estate and outreach to new people. -To run a series of 10 Food Growing Workshops in our Secret Garden for residents to learn about growing their own food	£3,708	
414978	EFA London	Espacio Mama	Espacio Mama will be a weekly meeting/informal English class for Spanish speaking mothers of children under 3 (and mums to be) hosted in the Salvation Army in Camberwell. This project will provide a safe space for Spanish speaking mothers with young children to share experiences and concerns, make friends and support each other. The group will be facilitated by a member of the community (with health experience) and supported by an ESOL (English for Speakers of Other Languages) teacher. The project aims to improve the social capital, well-being, health outcomes and English language skills of participants. Health advice and information will be given by the facilitator and guest health care workers in this informal setting and in response to the needs and questions of participants.	£3,911	
415977	Future Essence	Future Essence Dance Project	The aim of the project is to run free dance classes for young people aged 4-18 years. In the project children will learn the value of discipline, dedication and commitment through activities and experiences. At the end of the project children would have performed at various local events/ fundraisers, entertaining our community, family friends, gained certificates and medals for participating in the project also self confidence, new dance skills and new friends	£5,080	

Camberwell Community Council Neighbourhoods Funds 2015/16 Applications

Reference:	Name of Group:	Name of Project:	Project Description	Funding applied for [£]:	Proposed Award
414728	Grosvenor Estate tenants and residents association	Grosvenor Estate Community Cinema	Our project will enable us to launch the Grosvenor Estate cinema club as an inclusive, community building initiative. Our community is friendly but diverse and the different groups don't meet as much as we would like. Film showings will be a way of reaching out to people who are too busy or feel put off by more formal structures like TRA meetings. Our suggested programme includes kids matinees, regular evening screenings and four to six "seasons" through the year. We envisage that seasons as varied as silver screen season, books on screen season produced by our book club, a South American or Nigerian season, an LGBT celebration, a Michael Caine season to celebrate one of our former local residents.	£980	
414798	London Tribes and Tongues	Festac 2015	London Black and African Festival of Arts and Culture, is a festival that is designed to be an annual event. It will be a spectacle of cultural diversity that will attract thousands of visitors from within and outside the Borough. It will showcase music, dance, drums and culture from several African countries. Known as the "Festival in the Park", it will also feature a massive "kid zone" and "Mami Market". Arrangements are being made for the festival to be partnered by several African Embassies and High Commissions here in London. The main benefit of this festival is that it presents the general public an opportunity to see what it really means to live in a Multi-Cultural Society.	£116,905	
415003	Samuel Lewis Housing Group	Centenary Celebrations	Samuel Lewis is celebrating 100 years of existence and we want to pay someone to research the history and have a photographic exhibitions.	Application withdrawn	

Camberwell Community Council Neighbourhoods Funds 2015/16 Applications

Reference:	Name of Group:	Name of Project:	Project Description	Funding applied for [£]:	Proposed Award
414866	Southside Young Leaders Academy	SYLA Wooden Planters	We will teach design and build skills to boys 8-14 through partnership with local carpenters, providing wooden planters for other local groups and spaces around the comber grove site. We would like the project to include maintaining the lawn and garden area of the Burgess park care home and exploring suitable bike storage solutions for bicycles donated to our project by the local police force.	£5,000	
414475	Tennis2Bee	Individual tennis funding	We are trying to enhance the tennis skills of Justin Jabbie to enable him to receive localised consistent, coaching and tennis skills.	£20,182	
415231	Wyndham and Comber TRA	simple jewellery making	we would like fluxstudios to come and provide tuition on simple jewellery making for around 12 weeks. if successful we would like to extend.	£2,000	
414791	Grosvenor Estate Tenants and Residents Association	Food For All	This project will centre on the growing, cooking and sharing of good quality, affordable, seasonal food over a year, bringing together people of different ages and backgrounds around a common table. Building on previous successful food based events, we would like to seize the opportunity of this grant to develop and strengthen relationships between different groups in our community. We will hold 6 events over the year celebrating different seasons, to reach out to different parts of the community who will find different times of day the most opportune for eating together.	£2,000	
418674	The Welcome Singers	Weekly choral singing--The Welcome Singers	We meet to enjoy singing together, and to expand our knowledge of music and our repertoire. We hope to continue singing in local retirement homes.	£1,080	

Camberwell Community Council Neighbourhoods Funds 2015/16 Applications

Reference:	Name of Group:	Name of Project:	Project Description	Funding applied for [£]:	Proposed Award
413217	ForYouthSake	United Nations	United Nations is a small sided football tournament/Coaching/spotlight. a concept put together to attract to all nations backgrounds abilities to give them the opportunity to receive free professional football coaching , and to help learn respect for one another no matter their ability or background	£4,470	
378302 (CGS)	Grosvenor Estate T&RA	Street wheelie bin house numbers	Put a house number on every wheelie bin on the estate so everyone knows whose bins are whose and the bin men know where they should be going back to.	£2,800	
378324 (CGS)	Grosvenor Estate T&RA	Skip Days to reduce fly tipping	Twice a year to hire a large skip and encourage everyone to throw out all their waste in one go instead of fly tipping and waiting for the council to collect.	£1,000	
378345 (CGS)	Grosvenor Estate T&RA	Additional Street Cleaning and removal of Dog Mess	Weekly street cleaning for the estate as there are lots of street trees and is a main walk through for school children to the school and for residents from the Brandon Estate etc... to Burgess Park.	£2,794	

Camberwell Community Council Neighbourhoods Funds 2015/16 Applications

South Camberwell ward applications:

Reference:	Name of Group:	Name of Project:	Project Description	Funding applied for [£]:	Proposed Award
415180	Bessemer Belles Cheerleaders	Cheerleading Classes	Cheerleading classes for local children who cannot afford to access extra-curricular services. The classes would bring together children from different backgrounds and develop confidence, self esteem and help to lower obesity rates. The children would be able to put on performances heightening further community cohesion	£2,465	
414907	Bessemer Grange T&RA	Denmark Hill Community Self-Defence Club	This project is to establish a self-defence club available free of charge to young people on the estates and local area covered by the Bessemer Grange T&RA. The club will provide four sessions a week with for younger children (5-7) and teenagers (12-17). The funding will cover running of the club including equipment and hiring of the instructor over a 30 week period. The club will provide a combination of boxing and martial arts taught by Mr Lantan who is a qualified martial arts instructor. The club aims to provide a meeting point for young people on the estate to focus their energy, learn a skill, develop self-awareness and confidence, have fun and keep fit.	£5,000	
412752	Dulwich Hamlet Supporters Trust	DHST Football Community Activity	To raise the profile of Dulwich Hamlet FC, get more people to play sport, support their local football team, join the supporters trust and become involved in some of the community activities happening at the football club that include cleaning projects around the ground.	£514.44	

Camberwell Community Council Neighbourhoods Funds 2015/16 Applications

Reference:	Name of Group:	Name of Project:	Project Description	Funding applied for [£]:	Proposed Award
411548	East Dulwich Estate T&RA	Albrighton Youth	The project aims: to increase young people's enjoyment of positive activities; to reduce involvement in anti-social behaviour and its effects on the local community; to encourage involvement and inclusion of young people in the local community; for young people to participate, achieve and succeed in activities and challenges; to improve young people's basic skills, confidence, self-esteem and motivation; to provide a safe and enjoyable learning environment for all; to provide opportunities for young people to experience life outside of their immediate locality and to increase physical activity and improve health and well-being through activities that are fun, interactive and physically stimulating..	£30,000	
414796	East Dulwich Estate Youth Zone	East Dulwich Estate Youth Zone (EDEYZ)	The East Dulwich Youth Zone will provide weekly innovative youth provision based on the East Dulwich Estate through a broad range of life skills sessions and workshops, with local residents (young and old) working in partnership to deliver the sessions. Workshops will include: Drama Film screenings; Self defence. Board games; Employability; Costume and dress making; Cooking and baking; Music; Cycle maintenance etc. Many of these new skills will be showcased at the Annual Festival event.	£6,248	
414811	London Wildlife Trust	Growing Out Goes Wild	Through this project we will grow both people and plants. The project will give vulnerable adults in the community, in particular young adults with learning disabilities, the opportunity to improve their skills, health and well-being through practical conservation and gardening activities. Support for participants will be through a trained and experienced staff member, key volunteers trained in safeguarding vulnerable adults, first aid and volunteer management and the wider group of regular volunteers.	£4,208	

Camberwell Community Council Neighbourhoods Funds 2015/16 Applications

Reference:	Name of Group:	Name of Project:	Project Description	Funding applied for [£]:	Proposed Award
416941	Southwark Dominoes Competition Project (SDCP)	Southwark Dominoes Competition Project (SDCP)	<p>Dominoes is one of the world's oldest strategy games. A successful application will ensure that the thirty (30+) local Domino Clubs in Southwark are able to more fully take part and reap the benefits of engaging in this team sport .</p> <p>Young People and Adults (male and female) between the ages of 16 to 75 years old and a total of two hundred & fifty (250+) members and volunteers will take part in this Project. Some Young People we engage with and who get involved in playing Dominoes, suffer with Dyslexia and the Older Domino Players, suffer from Dementia. So by taking part in this Social Activity, can help stimulate their mind to overcome these Health Issues.</p>	£2,286.35	
414729	The Working Party Theatre Company	HollerBox: Dog Kennel Hill	<p>HollerBox, a community engagement project, will identify the unique voices that can be found within the Dog Kennel Hill Estate and offer a performance expression and celebration of the concerns and opinions of its residents aged 16 and up. A series of workshops held across 3 locations in and around the estate, supported by regular drop-ins where a member of TWP will record people's stories and opinions more informally, will create source material. From this a commissioned local writer will produce a short script working in conjunction with the local participants and aspiring writers over 4 writing workshops. The final script will be rehearsed with local participants and then performed in a 4 day run at a local venue.</p>	£5,000	
414313	Mother Goose Nursery	Community Gardening and Wellbeing	<p>To engage the local community in learning how to grow and cook fresh, healthy foods using the garden attached to Mother Goose Nursery and to encourage people to make use of the local green spaces, to appreciate the natural environment, and to help to conserve it. This will foster a sense of community and to enhance people's physical and mental wellbeing, by spending time doing purposeful tasks outdoors and help children to learn new IT skills in a natural environment.</p>	£4,680	

Camberwell Community Council Neighbourhoods Funds 2015/16 Applications

Reference:	Name of Group:	Name of Project:	Project Description	Funding applied for [£]:	Proposed Award
411601	Dog Kennel Hill Adventure	Empowering young women through creativity	Develop community cohesion between the young women giving them a sense of belonging & stronger relationships with each other & staff members, encouraging them to participate in arts & crafts etc. with real enjoyment. We want our young women to know the importance of loving & respecting oneself through creativity, and to teach them transferable skills such as making natural skincare safely, Dj-ing, Graphic design/t-shirt printing, and photography. We will discuss issues such as confidence, body image -relating to fashion, music, make up etc with this being the start of projects that encourage appreciation & respect of self, of peers and improved self confidence. We want to help instill leadership skills so these young women can guide other younger ones, We want to spark a real sense of fun, of creativity, encouraging them to express themselves.	£2,000	
415913	Katrina Thomas	Fun Fitness	Fun Fitness is a combination of fitness classes for adults and children such as dance aerobics and gymnastics, which will be run in 10 week blocks. The aim of this project is to improve and develop unity through getting active. The fitness classes will aim to get people from diverse backgrounds to work together and communicate. The classes are also aimed to help improve the health and general fitness of the local residents which will then lead to a boost in self-esteem and confidence which will aid in developing a strong community.	£4,200	

Camberwell Community Council Neighbourhoods Funds 2015/16 Applications

Reference:	Name of Group:	Name of Project:	Project Description	Funding applied for [£]:	Proposed Award
378232 (CGS)	Bessemer Grange TRA	Improvement to children's park Denmark Hill Estate	To improve and repair children's park on the Denmark Hill Estate. Because of broken equipment the park is not used as it should be. As the park is on the estate it is a quick and easy activity which the local children can benefit from.	£10,000	
400194 (CGS)	Ms Sandra Joseph	Fence painting programme	To prime and then paint the wooden fences that border the communal open spaces of blocks 1-15 Hillcrest, 16-30 Hillcrest and 31-45 Hillcrest. This will visually pull together the communal garden areas and the blocks of flats thus making a visually coherent living space for the residents and discourage the inappropriate and antisocial use of the communal garden areas by altering the perception that they are neutral.	£4,500	

Camberwell Community Council Neighbourhoods Funds 2015/16 Applications

Brunswick Park & Camberwell Green ward applications:

Reference:	Name of Group:	Name of Project:	Project Description	Funding applied for [£]:
414974	Camberwell Arts	Camberwell Arts Festival (Feast)	Camberwell Arts is requesting funding from the Neighbourhoods Fund to support the 2015 Camberwell Arts Festival. Now in its 21st year, the Festival has been developed as a way of bringing local communities together to celebrate Camberwell. This year's Festival will take the theme of Feast - a celebration of food, culture and community in Camberwell. Providing a feast for the senses, the soul and the stomach, the festival will be developed in partnership with local residents, artists, community organisations and businesses, with a varied programme of events. Local residents and community groups will create art and food (including edible artworks) to share at a community feast "Picnic Camberwell" that launches the 2015 Camberwell Arts Festival, after which picnic tables will be donated to local green spaces and estates to enable al fresco dining throughout the summer. The event will also feature the Camberwell Community Kitchen, and if funding above £5,000 is available, the Camberwell Cookbook	£4,900
414841	Southwark Day Centre for Asylum Seekers	Growing Together	To enable asylum seekers and refugees from diverse backgrounds to improve their wellbeing through growing food and learning with volunteers and local people. To increase community cohesion through local people and clients planning and participating in enjoyable, outdoor learning activities together. The project will include 30 weekly gardening sessions at our allotment facilitated by an experienced community gardener and up to 3 complementary workshops depending on cost (eg bee-keeping; fruit pruning; medicinal herb remedies), It will also include a family event in Lettsom Gardens including picnic/BBQ with workshops eg bushcraft, nature trails, outdoor art integrating clients and local people who have allotments	£3,000

Item No. 10.1	Classification: Open	Date: 21 March 2015	Meeting Name: Camberwell Community Council
Report title:		Estate Parking Scheme - Elmington Estate	
Ward(s) or groups affected:		Camberwell Green and Brunswick Park wards	
From:		Head of Operations	

RECOMMENDATION

1. It is recommended that the following local traffic and parking amendments are approved for implementation subject to the outcome of any necessary statutory procedures. Consultation regarding introduction of a parking scheme on the estate have already taken place and residents are in agreement with the recommendation. Detail of the consultation is contained in Section 8 of the report under the key issues for consideration section.
 - Drayton House, Elmington Estate - to be included in an estate parking scheme
 - Hood House, Elmington Estate - to be included in an estate parking scheme
 - Herrick House, Elmington Estate - to be included in estate parking scheme
 - Shirley House, Elmington Estate - to be included in estate parking scheme
 - Dekker House, Elmington Estate - to be included in estate parking scheme
 - Cunningham House, Elmington Estate - to be included in an estate parking scheme
 - Bridges House, Elmington Estate - to be included in an estate parking scheme
 - Drinkwater House, Elmington Estate - to be included in an estate parking scheme
 - Proctor House, Elmington Estate - to be included in an estate parking scheme
 - Flatman House, Elmington Estate - to be included in an estate parking scheme
 - Langland House, Elmington Estate - to be included in an estate parking scheme
 - 1-47 Caspian Street, Elmington Estate - to be included in an estate parking

scheme

- Draycott Close, Elmington Estate - to be included in an estate parking scheme
- Jago Walk, Elmington Estate - to be included in an estate parking scheme
- 29-49 Brisbane Street, Elmington Estate - to be included in an estate parking scheme
- 61-91 Brisbane Street, Elmington Estate - to be included in an estate parking scheme
- Durfey Place, Elmington Estate - to be included in an estate parking scheme

BACKGROUND INFORMATION

2. Part 3H of the Southwark constitution delegates decision making for non-strategic traffic management matters to the community council.
3. Paragraph 16 of Part 3H of the Southwark constitution sets out that the community council will take decisions on the following local non-strategic matters:
 - the introduction of single traffic signs
 - the introduction of road markings
 - the setting of consultation boundaries for consultation on traffic schemes
 - the introduction of disabled parking bays
 - statutory objections to origin disabled parking bays.
4. This report gives recommendations for seventeen local traffic and parking amendments, involving the implementation of estate parking scheme.
5. The origins and reasons for the recommendations are discussed within the key issues section of this report.

KEY ISSUES FOR CONSIDERATION

6. The area housing team was contacted by the tenants and residents association (T&RA) to discuss problems they are experiencing with parking on their estate. The T&RA represents residents of the estate that meets to discuss issues affecting residents.
7. The T&RA identified a need for controlled parking within the estates. They explained that it was difficult for residents to park in the daytime in most of the blocks and believe the vehicles belong to commuters who park on their estate during working hours during the week and sometimes on weekends.
8. The housing and community services department have undertaken a ballot on the matter with residents of the estate. This was done in November 2012 by balloting 465 homes. 89 ballot forms were returned with a preference for the introduction of an estate parking scheme. 58 voted for the introduction of a parking scheme with visitors permit and 31 voted for a resident only parking scheme. Due to passage of time in implementing the scheme, another meeting

was held with residents and the T&RA to discuss the matter on 11 February 2015 and they voted for the area office to proceed with implementation of the scheme.

9. The scheme will be introduced in the form of:
 - One free permit per household which can be registered to a maximum of two cars per household.
 - Resident permits which be purchased at a cost of £16.00 for a strip of ten visits.
10. Enforcement period is Monday-Friday, 8.30am - 7.00pm and 9.30am - 5.00pm on Saturdays and Sundays.
11. It is therefore recommended that a parking permit scheme is introduced on the estate to provide parking facility to assist residents of the estate.
12. Having a parking scheme on the estates will ensure only residents and their visitors are entitled to the parking spaces available to park.
13. That the following regeneration areas on Elmington Estate be excluded from the scheme.
 - 1-27 Benhill Road (odds)
 - 29-59 Benhill Road (odds)
 - 90-106 Benhill Road (evens)
 - 1-51 Houseman Way.
14. The resident officer has identified areas that can be used for the creation of more parking bays on the estate. This will involve creation of disabled and general parking bays to increase the number of parking spaces on the estate. This will be to the residents benefit whilst not significantly changing the layout of the estate.

Community impact statement

15. The recommendations are area based and will therefore have greatest effect on non-residents and non-visitors of the estate.
16. The introduction of the parking scheme will benefit residents of the estate and their visitors.
17. With the exception of those benefits and risks identified above, the recommendations are not considered to have a disproportionate effect on any other community or group.
18. The recommendations support the council's equalities and human rights policies and promote social inclusion by:
 - Providing improved access for key services such as emergency and refuge vehicles.
 - Improving road safety, in particular for vulnerable road users, on the public highway.

Resource implications

19. All costs arising from implementing the recommendations will be fully contained within the existing public realm budget and have no cost implication to residents or leaseholders.

Legal implications

20. Traffic Management Orders would be made under powers contained within the Road Traffic Regulation Act (RTRA) 1984.
21. Should the recommendations be approved the council will give notice of its intention to make a traffic order in accordance with the Local Authorities Traffic Order (Procedure) (England and Wales) Regulations 1996.
22. These regulations also require the council to consider any representations received as a result of publishing the draft order for a period of 21 days following publication of the draft order.
23. Should any objections be received they must be properly considered in the light of administrative law principles, human rights law and the relevant statutory powers.
24. By virtue of section 122, the council must exercise its powers under the RTRA 1984 so as to secure the expeditious, convenient and safe movement of vehicular and other traffic including pedestrians, and the provision of suitable and adequate parking facilities on and off the highway.
25. These powers must be exercised so far as practicable having regard to the following matters
 - a) the desirability of securing and maintaining reasonable access to premises
 - b) the effect on the amenities of any locality affected including the regulation and restriction of heavy commercial traffic so as to preserve or improve amenity
 - c) the national air quality strategy
 - d) facilitating the passage of public service vehicles and securing the safety and convenience of their passengers
 - e) any other matters appearing to the council to be relevant.

Consultation

26. No informal (public) consultation has been carried out.
27. Where consultation with stakeholders has been completed, this is described within the key issues section of the report.
28. Should the community council approve the items, statutory consultation will take place as part of the making of the traffic management order. The process for statutory consultation is defined by national regulations.
29. The council will place a proposal notice in proximity to the site location and also publish the notice in the Southwark News and the London Gazette.
30. The notice and any associated documents and plans will also be made available

for inspection on the council's website or by appointment at its 160 Tooley Street office.

31. Any person wishing to comment upon or object to the proposed order will have 21 days in which do so.
32. Should an objection be made that officers are unable to informally resolve, this objection will be reported to the community council for determination, in accordance with the Southwark constitution.

BACKGROUND DOCUMENTS

Background Papers	Held At	Contact
None		

APPENDICES

No.	Title
None	

AUDIT TRAIL

Lead Officer	Paul Langford, Head of Operations	
Report Author	Ade Adeite, Resident Services Manager	
Version	Final	
Dated	13 February 2015	
Key Decision?	No	
CONSULTATION WITH OTHER OFFICERS / DIRECTORATES / CABINET MEMBER		
Officer Title	Comments Sought	Comments Included
Director of Legal Services	No	No
Strategic Director of Finance and Corporate Services	No	No
Cabinet Member	No	No
Date final report sent to Constitutional Team	13 February 2015	

Item No. 10.2	Classification: Open	Date: 21 March 2015	Meeting Name: Camberwell Community Council
Report title:		Champion Hill parking consultation	
Ward(s) or groups affected:		South Camberwell ward	
From:		Head of Public Realm	

RECOMMENDATION

1. That the community council comment upon the boundary for a parking consultation as defined in Appendix 1, and upon the consultation methods detailed in paragraphs 16 and 17.

BACKGROUND INFORMATION

2. Part 3D of the Southwark constitution sets out that decisions relating to strategic transport issues, including parking zones, are a matter for decision by the relevant cabinet member.
3. Part 3H of the Southwark constitution identifies that the community council should be consulted on strategic transport decisions, such as the method of consultation and whether to create a new parking zone.
4. This report is presented to the community council for the purposes of consultation on the boundary and method of a strategic parking project.

KEY ISSUES FOR CONSIDERATION

Project scope

5. To carry out a combined first and second stage parking consultation on the principle and detail of a possible new parking zone in the Champion Hill area.

Primary aims of a parking zone

6. Improve availability of parking spaces: Give priority to certain groups i.e. residents and their visitors, loading and business short-stay parking over and above commuter parking (see parking hierarchy, appendix 2).
7. Reduce overall traffic levels: parking, by definition, is preceded by a trip and the council has a clear policy to reduce traffic levels with the aim of reducing congestion, improving air quality and amenity and to encourage sustainable transport modes (walking/cycling) by deterring non-essential journeys.

8. Improve road safety and smooth traffic flow: Zones reduce the level of parking occupancy and provide natural passing spaces enabling pedestrians to cross the street more safely and for vehicles to pass one another more easily.
9. Reduce parking demand such that streets can be used for purposes other than just parking such as tree planting or on-street cycle parking: Studies have also shown that streets with lower levels of traffic have a positive effect on social interaction.
10. Assist control on future development (enabling planning department to make new developments parking permit exempt).

History of parking zones in the area

11. South Camberwell (L) parking zone is located to the north of the recommended project area. L parking zone was introduced in 1999 operating Monday – Friday, 8.30am – 6.30pm. In 2007 the zone was extended into the Hamlet.
12. The recommended consultation area has not been consulted in the past ten years.

Consultation area

13. The area recommended for consultation is identified by way of a map contained in Appendix 1. The surrounding CPZs (and non-CPZ areas) are also shown on the map.
14. The area recommended reflects:
 - a) correspondence (see paragraphs 18 to 21)
 - b) parking stress data (see paragraphs 22 to 26)
 - c) parking policy
 - d) a logical grouping of streets
 - e) a section 106 (s106/133767) commitment to undertake a parking study in the area, associated with planning permission granted for King's College Hall, 10 Champion Hill (09-AP-1089)
15. Please note that the project relates only to the public highway in this area and not to any housing estate carparks or roads.

Consultation methods

16. The method of consultation and decision making is fundamentally determined by the council constitution and the strategic transport decision making process (Appendix 3).
17. Parking zone consultations follow a standard process that was established in the Parking and Enforcement Plan and is summarised in Figure 1 as published on the council's website.

Stage		Expected dates
Design and consultation	Parking stress (occupancy / duration) surveys	Completed Jan '15
	Inception report to community council	March
	3 week consultation - pack and questionnaire to all residents, businesses and stakeholders - public exhibitions	September
	Data analysis	October
	Draft reports presented to community council for final comment	November
Decision making	Final reports and decision to be taken by Cabinet Member for Regeneration, Planning and Transport	December
	Statutory consultation (traffic orders)	January 2016
	Implementation and go-live	February 2016

Figure 1

Correspondence

18. Requests from the public to introduce a parking zone, or to consult upon the introduction thereof, are one indicator that assists in the development of proposals.
19. Where requests are geographically concentrated it is likely to indicate:
 - a) some degree of broad public support to prioritise parking
 - b) 'parking stress' (where demand for parking is approaching or exceeding the available supply)
20. It is important that requests should only be used as an indicator and these are no substitute for a proper consultation. Research has shown that "customers very rarely complain to the service/ product provider. Instead they will tell their friends, who will in turn tell their friends, creating a pyramid of dissatisfaction." Equally, those members of the public who do not consider there to be a problem are fairly unlikely to write to the council to ask to keep the status quo.
21. The council collates requests for parking zone consultations in a map system to assist in the identification of patterns that may be more localised than street level, especially where they originate from a long road which may have different parking characteristics at different ends. These maps have been presented to ward members in advance of this meeting. To date the council has received eight requests from residents in the recommended study area.

Parking stress data

22. In January 2015, the council commissioned a wide ranging parking stress survey using a standard methodology for collation of data on occupancy and duration of stay.
23. The survey was carried out from 0600 to 2100 on a weekday and Saturday, with a

beat frequency of 1 hour. This period enables comparison and assumptions to be made about who is parking and for how long.

24. The results of the survey will provide a clear picture about the profile of parking in the area.
25. At the time of writing, the final version of the survey had not been received. As shown in Figure 1, analysis of all data is programmed for October and will be presented to the community council, alongside the consultation results, in November.
26. A first draft of the weekday and weekend parking occupancy is available in Appendix 4, of the four streets recommended for a parking consultation in this report the following highlights can be noted:
 - a) average occupancy is slightly higher during the week (59%) than at the weekend (55%)
 - b) during the week, parking occupancy is at its peak in the middle of the day with lower occupancies in the late afternoon
 - c) at the weekend, demand is at its highest in the early morning with pressure substantially reduced in the afternoon
 - d) during the week there is sustained “very high” pressure in Arnould Avenue and Monclar Road. At the weekend there is prolonged pressure in Arnould Avenue.

Policy implications

27. The recommendations contained within this report are consistent with the policies of the Transport Plan 2011, particularly

Policy 1.1 – pursue overall traffic reduction.

Policy 4.2 – create places that people can enjoy.

Policy 8.1 – seek to reduce overall levels of private motor vehicle traffic on our streets.

Community impact statement

28. The policies within the transport plan are upheld within this report and have been subject to an equality impact assessment.
29. The recommendations are area based and therefore will have greatest affect upon those people living, working or traveling in the vicinity of the area where the proposals are made.
30. The implementation and operation of a parking zone contributes to an improved environment through the elimination of on-street commuter parking and the associated reduction of local and borough-wide traffic volumes.
31. The introduction of yellow lines at junctions gives benefit to all road users through the improvement of inter-visibility and therefore road safety.
32. There is a risk that new restrictions may cause parking to be displaced and, indirectly, have an adverse impact upon road users and neighboring properties at

that location. However, this cannot be entirely preempted until the consultation is completed and any resulting recommendations implemented and observed.

33. The consultation leaflets will meet communication guidance with a languages page with advice of how to access the council's translation services. Large format leaflets will be available for those with visual impairment.
34. With the exception of those benefits and risks identified above, the recommendations are not considered to have a disproportionate effect on any other community or group.
35. The recommendations support the council's equalities and human rights policies and promote social inclusion by:
 - Providing improved access for key services such as emergency and refuge vehicles.
 - Improving road safety, in particular for vulnerable road users, on the public highway
 - Prioritising parking to those who most need it, in accordance with the council's parking hierarchy.

Resource implications

36. The cost of the project and implementation (if supported) of the parking zone will be met from a contribution established for this purpose in a section 106 agreement (s106/133767) associated with planning permission granted for King's College Hall, 10 Champion Hill (09-AP-1089).
37. A better estimate of the costs and potential parking income from this scheme will be reported at the end of the consultation.

Consultation

38. Consultation has been carried out with all affected ward members on the recommendations contained within this report.

BACKGROUND DOCUMENTS

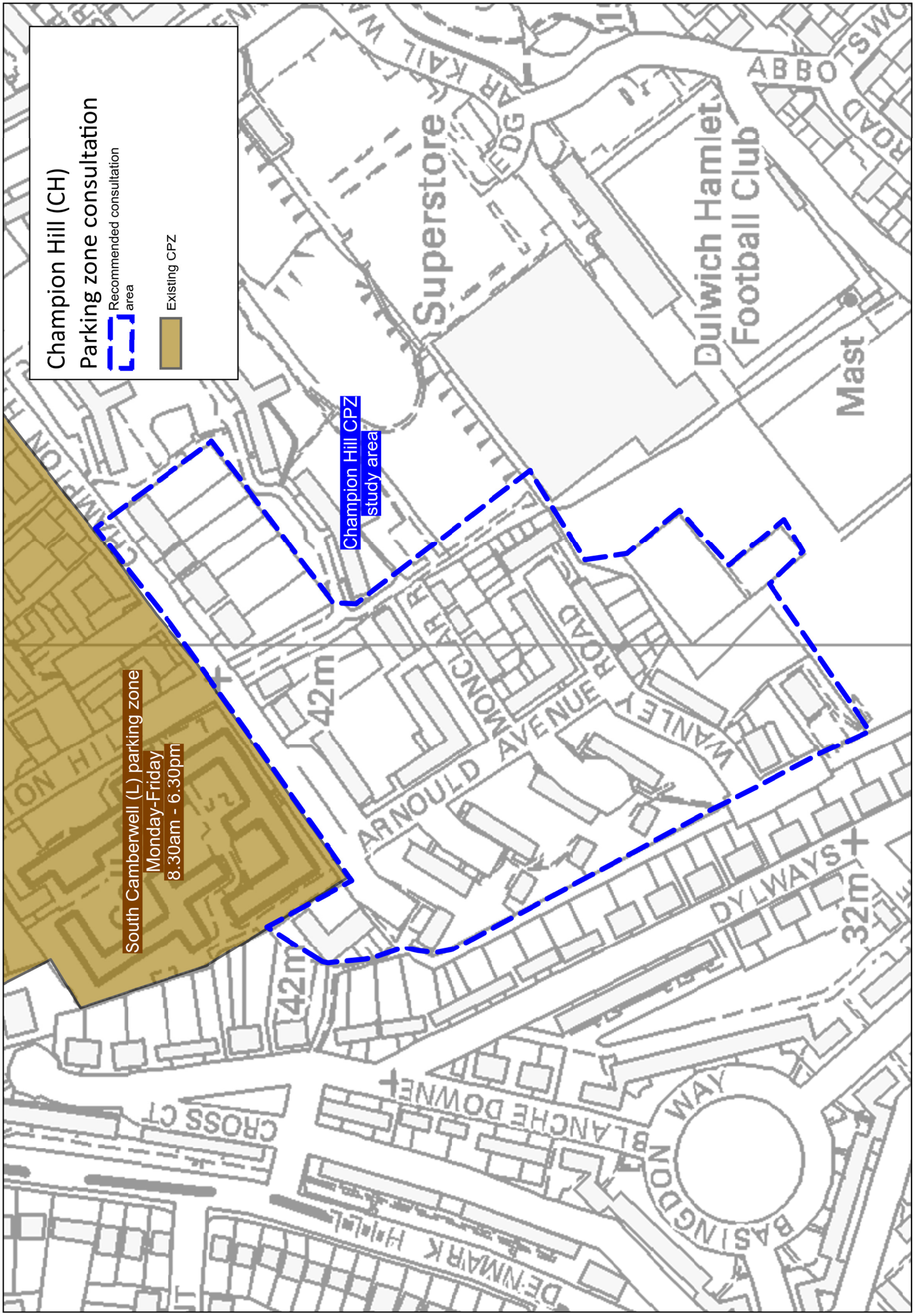
Background Papers	Held At	Contact
Transport Plan 2011	Southwark Council Environment and Leisure Public Realm projects Parking design 160 Tooley Street London SE1 2QH Online: http://www.southwark.gov.uk/info/200107/transport_policy/1947/southwark_transport_plan_2011	Tim Walker 020 7525 2021

APPENDICES

No.	Title
Appendix 1	Map of recommended consultation boundary
Appendix 2	Adopted parking hierarchy
Appendix 3	Strategic transport decision making process
Appendix 4	Table of weekday and weekend parking occupancy (draft data)

AUDIT TRAIL

Lead Officer	Des Waters, Head of Public Realm	
Report Author	Tim Walker, Senior Project Engineer	
Version	Final	
Dated	9 March 2015	
Key Decision?	No	
CONSULTATION WITH OTHER OFFICERS / DIRECTORATES / CABINET MEMBER		
Officer Title	Comments Sought	Comments Included
Director of Legal Services	No	No
Strategic Director of Finance and Corporate Services	No	No
Cabinet Member	No	No
Date final report sent to Constitutional Team	11 March 2015	



Champion Hill (CH)

Parking zone consultation

Recommended consultation area

Existing CPZ

South Camberwell (L) parking zone
Monday-Friday
8.30am - 6.30pm

Champion Hill CPZ
study area

42m
42m

32m

Superstore

Dulwich Hamlet
Football Club

Mast

CROSS CT

BLANCHE DOWNER

DENMARK HOTEL

BASKINGDON WAY

DYLWAYS

ARNOLD AVENUE

WANLEY ROAD

ABBO ROAD

TAR KAIL WAY

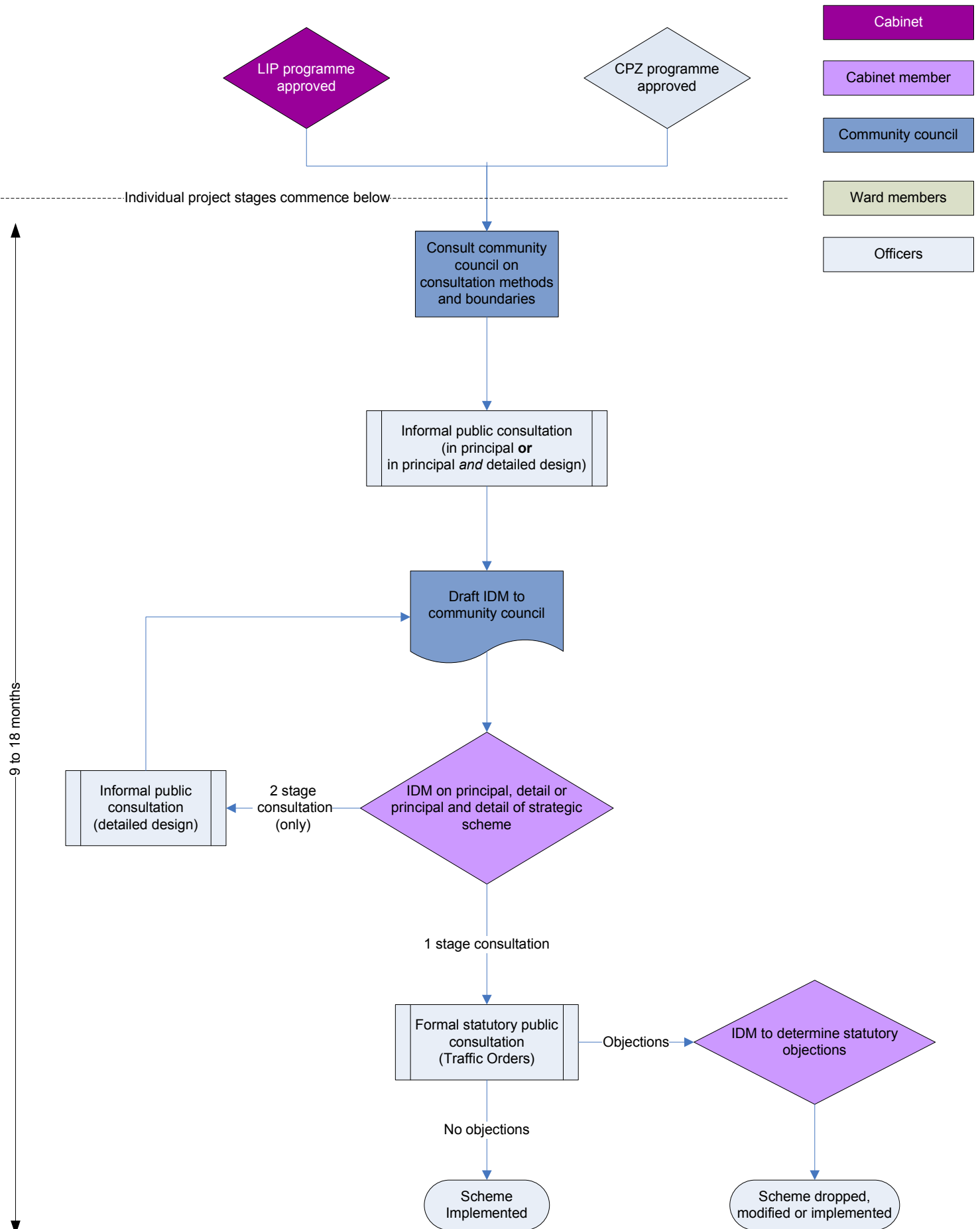
APPENDIX 2

Table 16, The parking hierarchy

Road users	Local disabled resident parking need (parking at origin)
	Non local disabled parking need (parking at destination)
	Car share and car club bays
	Local resident parking
	Building contractors, appliance repair and other tradesman services
	Essential worker in the delivery of public service and carers
	Local business essential parking/servicing need
	Short stay shopper/visitor parking need
	Long stay shopper/visitor parking need
	Long stay commuter parking need
Vehicle type	Emergency vehicle
	Cycle
	Bus
	Public service vehicle including managed levels of short term coach parking
	Taxi
	Shared/pool car
	Cleaner/greener private car
Private car and powered two wheeler	

Strategic transport project decision making

Existing constitution



Average parking occupancy per beat per street (Denmark Hill - weekday).

Thursday, 15th January 2015																	
STREET NAME	06:00 - 07:00	07:00 - 08:00	08:00 - 09:00	09:00 - 10:00	10:00 - 11:00	11:00 - 12:00	12:00 - 13:00	13:00 - 14:00	14:00 - 15:00	15:00 - 16:00	16:00 - 17:00	17:00 - 18:00	18:00 - 19:00	19:00 - 20:00	20:00 - 21:00	% Average	Capacity (No. of vehicles)
A215 DENMARK HILL	-	-	-	-	-	-	-	-	-	-	-	-	-	-	-	-	0
A215 HERNE HILL	133%	33%	67%	133%	133%	133%	100%	100%	100%	0%	0%	0%	0%	200%	67%	80%	3
A2214 VILLAGE WAY	13%	19%	75%	81%	94%	92%	86%	86%	87%	94%	87%	73%	56%	46%	54%	69%	63
ARDBEG ROAD	78%	84%	92%	90%	88%	90%	90%	96%	96%	90%	90%	100%	84%	84%	84%	89%	51
ARNOULD AVENUE	95%	105%	100%	95%	95%	95%	95%	95%	85%	65%	85%	75%	75%	80%	80%	88%	20
BASINGDON WAY	87%	89%	97%	99%	100%	100%	99%	100%	101%	100%	99%	89%	80%	75%	72%	92%	87
BECKWITH ROAD	101%	103%	99%	101%	102%	102%	104%	100%	98%	93%	100%	101%	96%	94%	94%	99%	94
BLANCHEDOWNE	90%	107%	111%	115%	115%	113%	116%	113%	115%	111%	111%	110%	97%	93%	87%	107%	61
CASINO AVENUE	63%	66%	69%	73%	76%	80%	80%	77%	73%	71%	71%	70%	64%	58%	59%	70%	184
CHAMPION HILL	28%	31%	28%	28%	28%	28%	31%	31%	25%	22%	31%	25%	17%	19%	19%	26%	36
CROSTHWAITE AVENUE	36%	39%	48%	58%	64%	63%	59%	59%	59%	53%	55%	41%	38%	38%	31%	49%	64
DANECROFT ROAD	85%	81%	81%	82%	81%	81%	82%	80%	82%	81%	81%	80%	72%	69%	69%	79%	108
DOMETT CLOSE	67%	60%	60%	67%	67%	67%	80%	80%	60%	47%	47%	40%	47%	53%	60%	60%	15
DOWSON CLOSE	50%	55%	59%	55%	55%	55%	59%	59%	50%	50%	41%	41%	36%	41%	45%	50%	22
DYLWAYS	44%	45%	49%	51%	52%	50%	50%	50%	47%	47%	42%	48%	47%	44%	44%	47%	139
ELFINDALE ROAD	98%	99%	104%	104%	102%	105%	103%	103%	102%	96%	85%	88%	94%	94%	96%	98%	113
ELMWOOD ROAD	67%	71%	79%	82%	82%	80%	83%	85%	86%	77%	79%	76%	73%	68%	69%	77%	128
FRANKFURT ROAD	87%	94%	93%	91%	90%	90%	91%	91%	90%	87%	94%	87%	79%	82%	82%	89%	101
GYLCOTE CLOSE	35%	35%	37%	41%	41%	33%	29%	29%	29%	29%	29%	25%	37%	37%	39%	34%	51
HALF MOON LANE	54%	90%	110%	117%	122%	122%	122%	120%	112%	110%	120%	124%	107%	76%	93%	107%	41
MONCLAR ROAD	94%	100%	94%	94%	81%	81%	94%	100%	81%	75%	69%	69%	75%	75%	75%	84%	16
NAIRNE GROVE	33%	40%	69%	84%	72%	74%	71%	69%	72%	69%	57%	48%	36%	36%	36%	58%	58
RED POST HILL	37%	40%	49%	63%	67%	69%	71%	67%	68%	62%	68%	56%	49%	32%	44%	56%	117
SUNRAY AVENUE	31%	41%	54%	59%	59%	60%	58%	59%	57%	56%	56%	46%	40%	35%	37%	50%	189
UNNAMED ROAD ¹	43%	52%	57%	57%	57%	57%	57%	62%	48%	52%	48%	43%	33%	33%	43%	50%	21
WANLEY ROAD	46%	42%	46%	48%	50%	50%	48%	48%	52%	40%	40%	40%	44%	42%	44%	46%	52
WOODFARRS	71%	70%	72%	76%	66%	73%	71%	69%	73%	76%	70%	61%	52%	55%	53%	67%	83
WYNEHAM ROAD	89%	92%	92%	95%	97%	95%	92%	92%	89%	84%	92%	87%	95%	82%	3%	85%	38

Key	
Very Low	0 to <=50%
Low to Medium	50 to <70%
Medium to High	>=70 to <80%
High	>=80 to <90%
Very High	>=90%

¹ Champion Hill spur route, perpendicular to Monclar Road.

Average parking occupancy per beat per street (Denmark Hill - weekend).

Saturday, 24th January 2015																	
STREET NAME	06:00 - 07:00	07:00 - 08:00	08:00 - 09:00	09:00 - 10:00	10:00 - 11:00	11:00 - 12:00	12:00 - 13:00	13:00 - 14:00	14:00 - 15:00	15:00 - 16:00	16:00 - 17:00	17:00 - 18:00	18:00 - 19:00	19:00 - 20:00	20:00 - 21:00	% Average	Capacity (No. of vehicles)
A215 DENMARK HILL	-	-	-	-	-	-	-	-	-	-	-	-	-	-	-	-	0
A215 HERNE HILL	67%	100%	100%	67%	133%	133%	167%	133%	100%	67%	133%	100%	100%	133%	100%	109%	3
A2214 VILLAGE WAY	8%	8%	13%	27%	38%	21%	14%	16%	16%	14%	11%	14%	16%	14%	17%	17%	63
ARBEG ROAD	84%	88%	86%	92%	75%	65%	59%	63%	57%	59%	61%	67%	67%	67%	80%	71%	51
ARNOULD AVENUE	110%	105%	100%	90%	95%	70%	80%	90%	100%	85%	85%	70%	80%	90%	95%	90%	20
BASINGDON WAY	82%	84%	80%	77%	77%	78%	56%	57%	61%	61%	67%	66%	67%	64%	62%	69%	87
BECKWITH ROAD	89%	88%	87%	86%	84%	81%	73%	63%	60%	57%	55%	63%	65%	65%	66%	72%	94
BLANCHDOWNNE	90%	93%	90%	85%	87%	77%	70%	69%	77%	79%	77%	98%	107%	116%	131%	90%	61
CASINO AVENUE	61%	60%	57%	55%	54%	51%	49%	51%	48%	49%	51%	51%	54%	55%	56%	53%	184
CHAMPION HILL	22%	22%	22%	22%	19%	17%	22%	22%	19%	19%	17%	19%	14%	17%	19%	20%	36
CROSTHWAITE AVENUE	38%	34%	36%	41%	31%	31%	22%	20%	28%	25%	30%	27%	22%	20%	23%	29%	64
DANECROFT ROAD	81%	83%	83%	77%	64%	63%	64%	67%	69%	68%	68%	59%	56%	59%	58%	68%	108
DOMETT CLOSE	73%	73%	67%	60%	53%	60%	60%	60%	53%	67%	67%	67%	67%	67%	60%	64%	15
DOWSON CLOSE	59%	59%	59%	50%	50%	41%	41%	36%	45%	45%	45%	27%	32%	32%	36%	44%	22
DYLWAYS	49%	48%	47%	40%	40%	35%	37%	44%	38%	37%	37%	42%	40%	39%	42%	41%	139
ELFINDALE ROAD	93%	92%	85%	82%	82%	72%	71%	72%	73%	74%	82%	79%	74%	73%	75%	79%	113
ELMWOOD ROAD	73%	76%	75%	70%	70%	66%	63%	60%	54%	57%	49%	53%	48%	50%	49%	61%	128
FRANKFURT ROAD	82%	84%	80%	79%	81%	78%	78%	75%	76%	76%	66%	67%	69%	67%	68%	75%	101
GYLCOTE CLOSE	37%	41%	39%	47%	45%	45%	43%	43%	37%	35%	39%	39%	37%	37%	37%	40%	51
HALF MOON LANE	44%	46%	44%	68%	95%	95%	78%	76%	68%	83%	71%	56%	49%	46%	49%	65%	41
MONCLAR ROAD	94%	88%	94%	88%	81%	81%	81%	75%	63%	56%	50%	63%	69%	75%	81%	76%	16
NAIRNE GROVE	19%	21%	21%	24%	28%	22%	24%	33%	24%	26%	17%	19%	19%	19%	19%	22%	58
RED POST HILL	32%	30%	31%	40%	45%	40%	33%	33%	34%	32%	39%	36%	35%	32%	28%	35%	117
SUNRAY AVENUE	28%	29%	28%	26%	26%	27%	26%	27%	27%	25%	26%	25%	27%	23%	23%	26%	189
UNNAMED ROAD ¹	33%	33%	38%	33%	29%	24%	24%	24%	33%	24%	33%	29%	24%	19%	24%	28%	21
WANLEY ROAD	40%	42%	40%	35%	33%	31%	27%	37%	35%	31%	27%	29%	31%	35%	31%	33%	52
WOODFARRS	57%	57%	53%	53%	55%	51%	46%	47%	51%	51%	47%	47%	51%	51%	47%	51%	83
WYNEHAM ROAD	95%	92%	87%	87%	84%	61%	55%	50%	37%	61%	61%	63%	45%	61%	55%	66%	38

Key	
Very Low	0 to <=50%
Low to Medium	50 to <70%
Medium to High	>=70 to <80%
High	>=80 to <90%
Very High	>=90%

¹ Champion Hill spur route, perpendicular to Monclar Road.

**CAMBERWELL COMMUNITY COUNCIL AGENDA DISTRIBUTION LIST (OPEN)
MUNICIPAL YEAR 2014-15**

NOTE: Original held by Constitutional Team (Community Councils) all amendments/queries to Tim Murtagh Tel: 020 7525 7187

Name	No of copies	Name	No of copies
To all Members of the Community Council			
Councillor Kieron Williams (Chair)	1	Borough Commander	1
Councillor Chris Gonde (Vice Chair)	1	Southwark Police Station	
Councillor Radha Burgess	1	323 Borough High Street	
Councillor Dora Dixon-Fyle	1	London SE1 1JL	
Councillor Tom Flynn	1		
Councillor Peter John	1		
Councillor Sarah King	1		
Councillor Mark Williams	1	Others	
Councillor Ian Wingfield	1	Elizabeth Olive, Audit Commission	1
		160 Tooley St.	
External			
		Total:	64
Press			
		Dated: 10 June 2014	
Southwark News	1		
South London Press	1		
Members of Parliament			
Harriet Harman, MP	1		
Officers			
Constitutional Officer (Community Councils) 2 nd Floor Hub 4, 160 Tooley St.	50		